

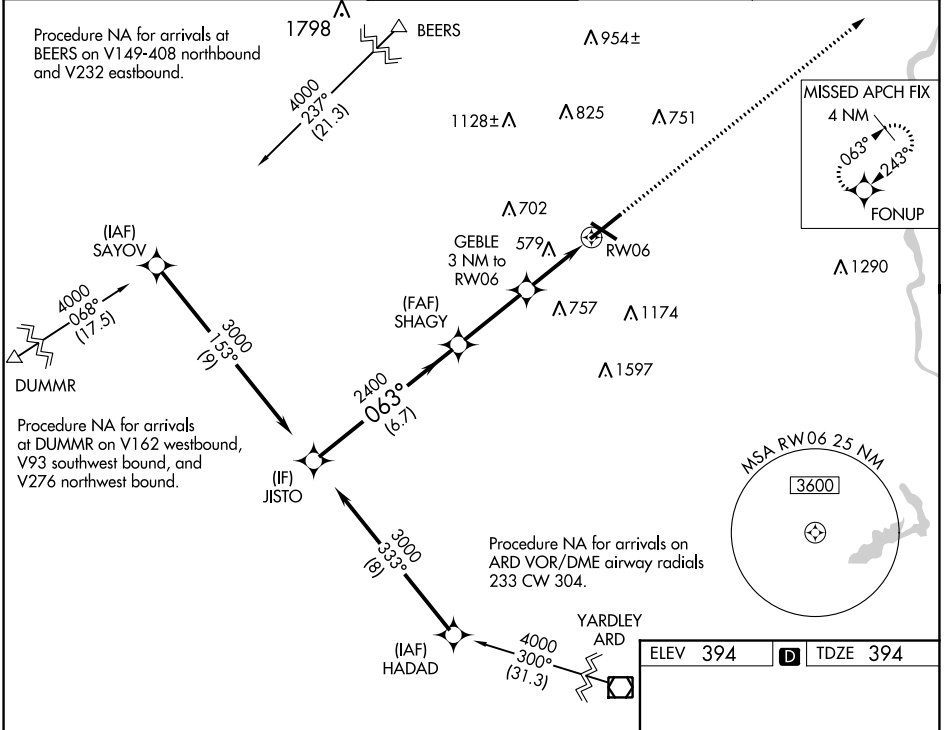
WAAS CH <b>69432</b>	APP CRS <b>063°</b>	Rwy Idg TDZE <b>394</b>	<b>7599</b>
<b>W06A</b>		Apt Elev <b>394</b>	

# RNAV (GPS) RWY 6

LEHIGH VALLEY INTL (ABE)

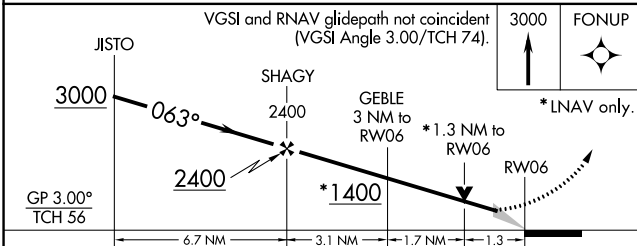
RNP APCH.	MALSR	MISSED APPROACH: Climb to 3000 direct FONUP and hold.
<p>For uncompensated Baro-VNAV systems, LNAV/VNAV NA below -8°C (18°F) or above 54°C (130°F). For inop ALS, increase LNAV Cat C/D visibility to 1½ SM. **RVR 1800 authorized with use of FD or AP or HUD to DA.</p>		

ATIS <b>126.975</b>	ALLENTOWN APP CON <b>119.65 124.45 351.8</b>	ALLENTOWN TOWER <b>120.5 257.95</b>	GND CON <b>121.9 257.95</b>	CLNC DEL <b>124.05 257.95</b>
------------------------	---	--	--------------------------------	----------------------------------



NE-4, 09 SEP 2021 to 07 OCT 2021

NE-4, 09 SEP 2021 to 07 OCT 2021



CATEGORY	A	B	C	D
LPV DA **	594/24		200 (200-½)	
LNAV/ DA VNAV	644/24		250 (300-½)	
LNAV MDA	840/24 446 (500-½)		840/45 446 (500-¾)	
CIRCLING	900-1 506 (600-1)		1180-2¼ 786 (800-2¼) 1600-3 1206 (1300-3)	

ELEV 394	D	TDZE 394
----------	---	----------

