

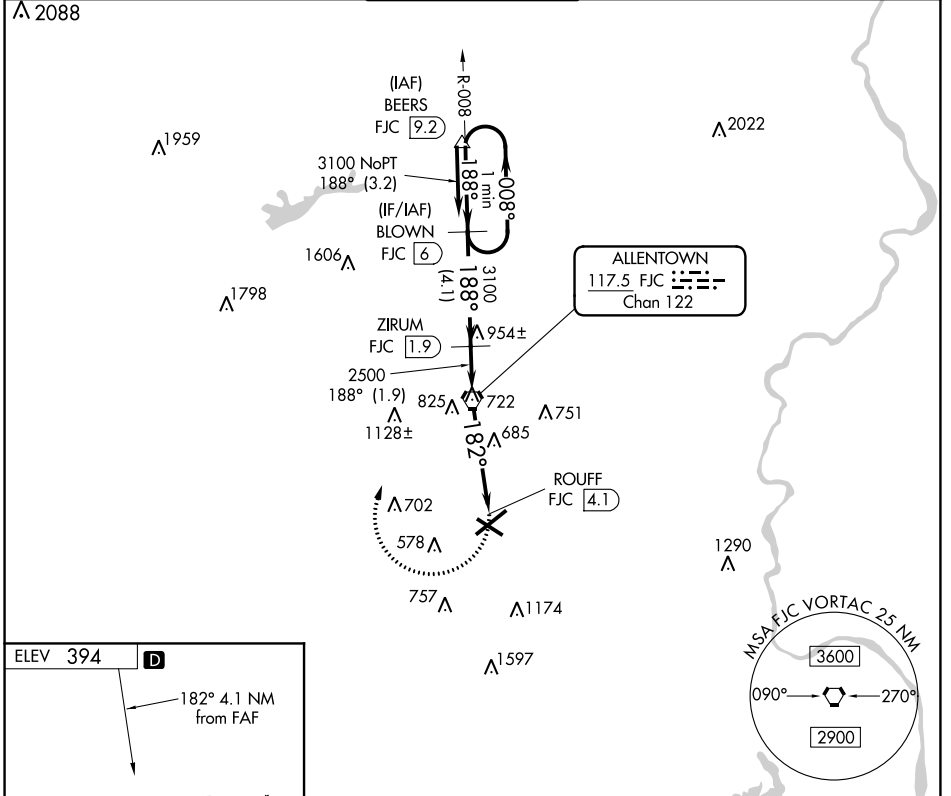
VORTAC FJC 117.5 Chan 122	APP CRS 182°	Rwy Idg TDZE Apt Elev	N/A N/A 394
---	------------------------	-----------------------------	--

TACAN-C

LEHIGH VALLEY INTL (ABE)

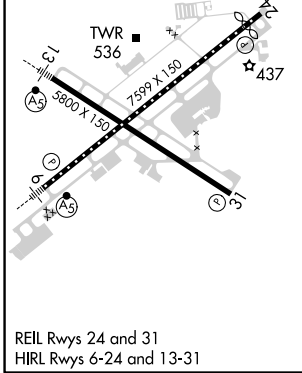
<p>▽</p> <p>▲ NA</p>	<p>MISSED APPROACH: Climbing right turn to 3100 direct FJC VORTAC then via FJC R-008 to BLOWN/6 DME and hold.</p>
----------------------	---

<p>ATIS 126.975</p>	<p>ALLENTOWN APP CON 119.65 124.45 351.8</p>	<p>ALLENTOWN TOWER 120.5 257.95</p>	<p>GND CON 121.9 257.95</p>	<p>CLNC DEL 124.05 257.95</p>
--------------------------------	---	--	--	--

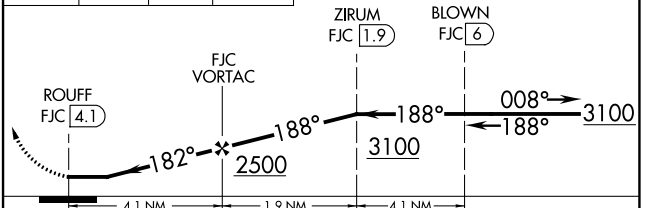


NE-4, 09 SEP 2021 to 07 OCT 2021

NE-4, 09 SEP 2021 to 07 OCT 2021



3100	FJC	FJC R-008	BLOWN FJC (6)	One Minute Holding Pattern
	◻			



CATEGORY	A	B	C	D
<p>◻ CIRCLING</p>	940-1	546 (600-1)	1180-2¼ 786 (800-2¼)	1600-3 1206 (1300-3)