

WAAS CH <b>69625</b> <b>W31A</b>	APP CRS <b>309°</b>	Rwy ldg TDZE <b>733</b> Apt Elev <b>777</b>
--	------------------------	---

# RNAV (GPS) RWY 31

ARDMORE MUNI (ADM)

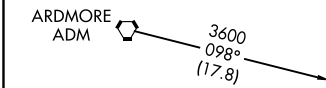
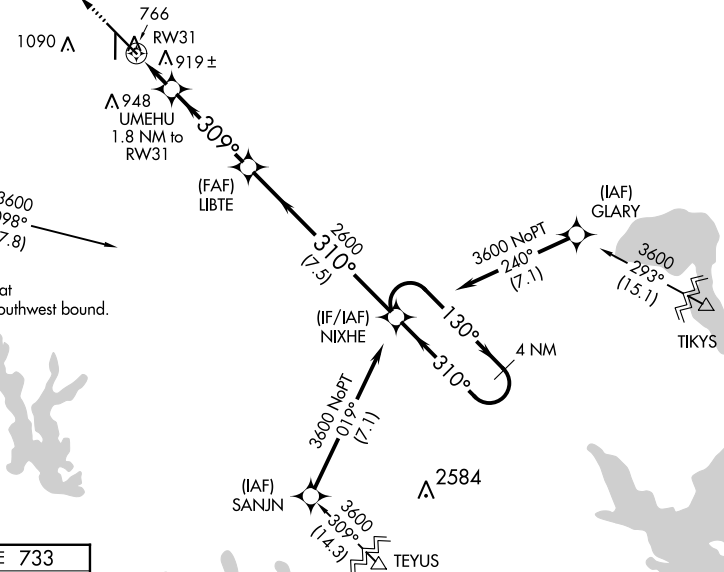
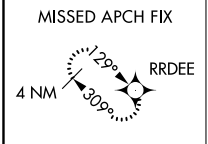
RNP APCH.

For uncompensated Baro-VNAV systems, LNAV/VNAV NA below -16°C or above 54°C. When local altimeter setting not received, use Ardmore Downtown Executive altimeter setting: increase LPV DA to 1026 feet; increase LNAV/VNAV DA to 1276 feet and all visibilities 3/8 SM; increase all MDA's 40 feet. Inop table does not apply to LPV, all Cats and LNAV Cats A and B. When using Ardmore Downtown Executive altimeter setting, inop table does not apply to LPV all Cats and LNAV Cats A and B. For inop ALS, increase LNAV Cats C and D visibility to 1/8 SM. For inop ALS, when using Ardmore Downtown Executive altimeter setting, increase LNAV Cats C and D to 1/8 SM. VDP NA when using Ardmore Downtown Executive altimeter setting. Rwy 31 helicopter visibility reduction below 3/4 SM NA. Rwy 13, 35 helicopter visibility reduction below 1 SM NA. Circling Rwy 13, 35 NA at night.

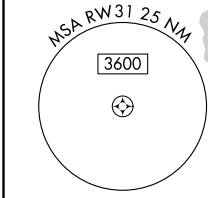
MALS

MISSED APPROACH:  
Climb to 3600 direct  
RRDEE and hold.

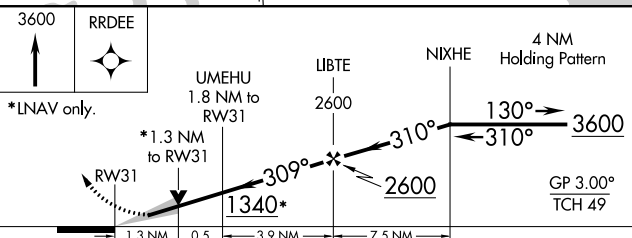
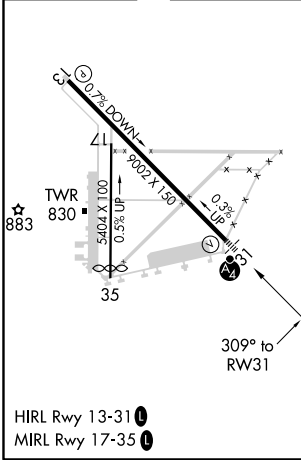
ATIS <b>125.6</b>	FORT WORTH CENTER <b>124.75 323.0</b>	ARDMORE TOWER* <b>118.5 (CTAF) 0 257.7</b>	GND CON <b>121.8</b>	UNICOM <b>122.95</b>
----------------------	--	---	-------------------------	-------------------------



Procedure NA for arrivals at ADM VORTAC on V161 southwest bound.



ELEV 777	D	TDZE 733
----------	---	----------



CATEGORY	A	B	C	D
LPV DA		991-1	258 (300-1)	
LNAV/VNAV DA		1241-1¼	508 (500-1¼)	
LNAV MDA		1180-1	447 (500-1)	
CIRCLING	1380-1 603 (700-1)	1440-1 663 (700-1)	1460-2 683 (700-2)	1700-3 923 (1000-3)

SC-1, 09 SEP 2021 to 07 OCT 2021

SC-1, 09 SEP 2021 to 07 OCT 2021