

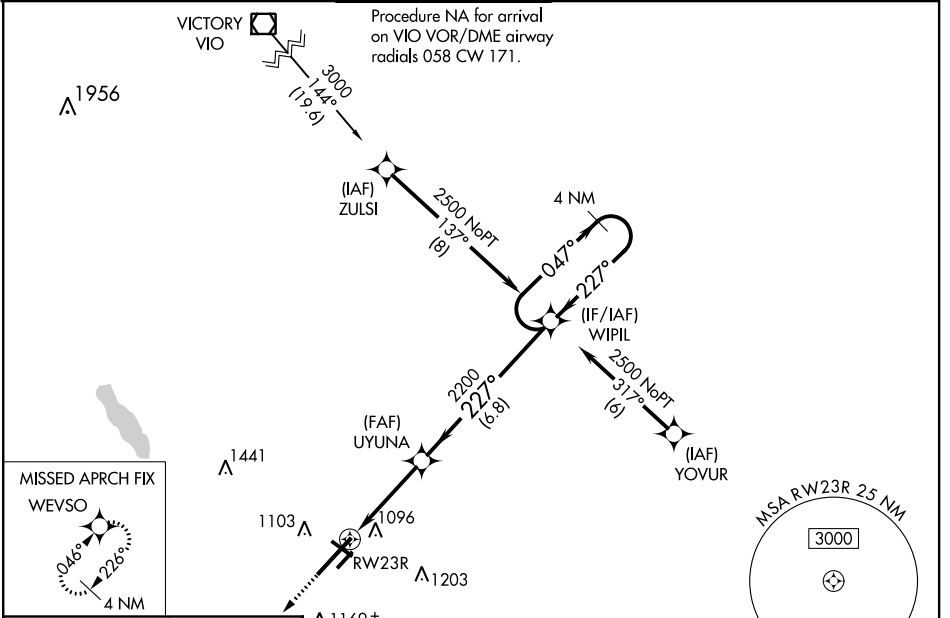
WAAS CH 56411 W23A	APP CRS 227°	Rwy Idg 10004 TDZE 929 Apt Elev 952
--	------------------------	--

RNAV (GPS) RWY 23R

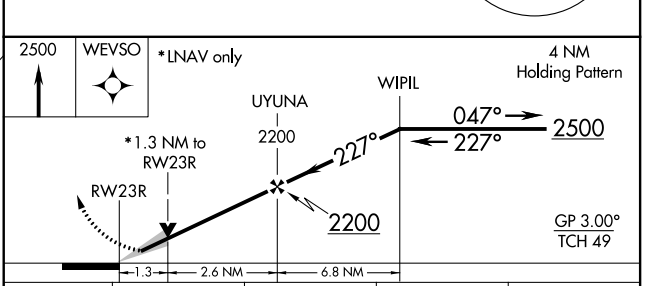
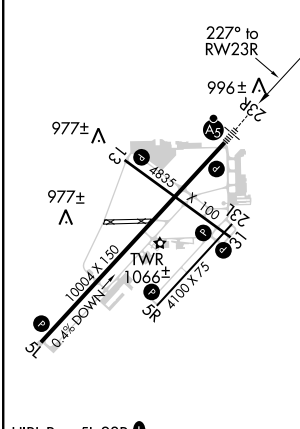
BATTLE CREEK EXEC AT KELLOGG FLD (BTL)

RNP APCH.	<p>⚠ Circling NA to Rwy 5R and 23L. Circling Rwy 31 NA at night. For uncompensated Baro-VNAV systems, LNAV/VNAV NA below -20°C or above 54°C. **RVR 1800 authorized with use of FD or AP or HUD to DA.</p>	MALS R	MISSED APPROACH: Climb to 2500 direct WEVSO and hold.
-----------	--	--------	---

ATIS 128.325	GREAT LAKES APP CON * 119.2 239.25	BATTLE CREEK TOWER * 126.825	GND CON 121.7	UNICOM 122.95	CTAF 126.825 Ⓜ
------------------------	--	--	-------------------------	-------------------------	---------------------------------



ELEV 952	D	TDZE 929
----------	----------	----------



CATEGORY	A	B	C	D
LPV DA **		1129/24	200 (200-½)	
LNAV/VNAV DA		1258/32	329 (400-⅝)	
LNAV MDA	1380/24	451 (500-½)	1380/45	451 (500-⅞)
C CIRCLING	1420-1 468 (500-1)	1480-1 528 (600-1)	1520-1½ 568 (600-1½)	1520-2 568 (600-2)

HIRL Rwy 5L-23L **Ⓜ**
MIRL Rwy 13-31 and 5R-23L **Ⓜ**
REIL Rwy 5L, 5R, 13, 23L and 31L **Ⓜ**

EC-1, 09 SEP 2021 to 07 OCT 2021

EC-1, 09 SEP 2021 to 07 OCT 2021