

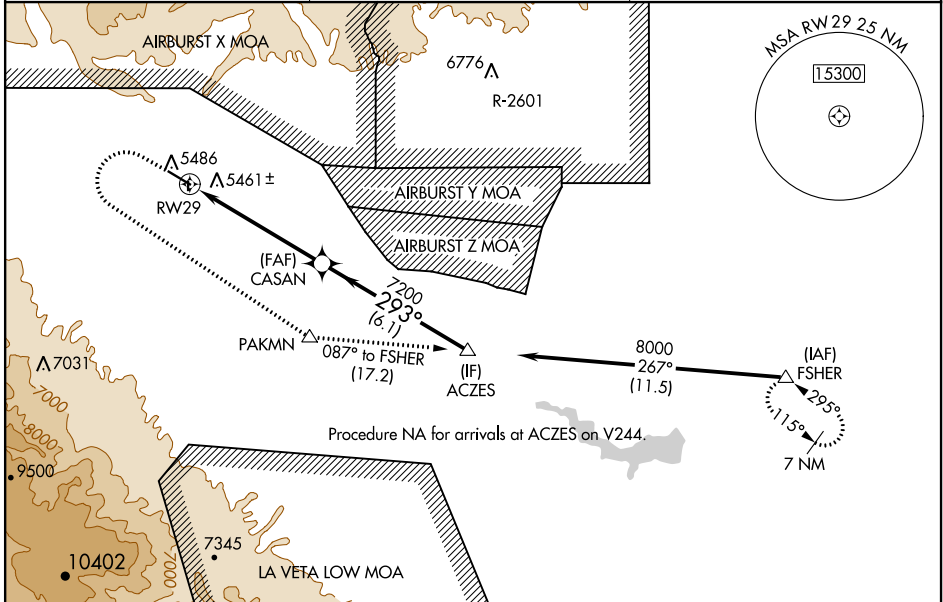
WAAS CH <b>69530</b> <b>W29A</b>	APP CRS <b>293°</b>	Rwy Idg TDZE Apt Elev	<b>5399</b> <b>5407</b> <b>5442</b>
--	------------------------	-----------------------------	---

# RNAV (GPS) RWY 29

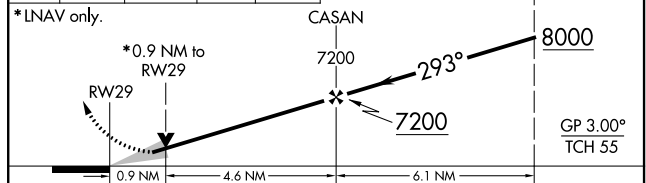
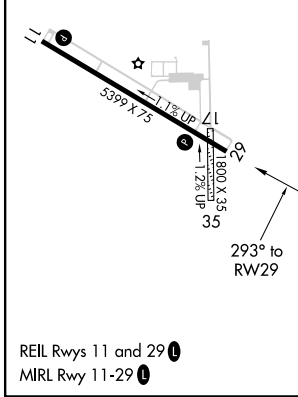
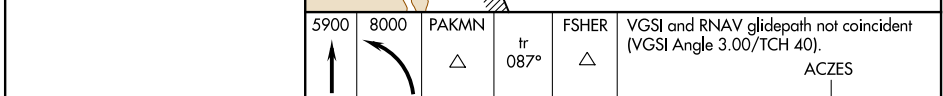
FREMONT COUNTY (1V6)

RNP APCH. ▼ For uncompensated Baro-VNAV systems, LNAV/VNAV NA below -25°C or above 54°C. Circling NA north of Rwy 11-29. Circling NA to Rwy 35.	MISSED APPROACH: (Do not exceed 210K until PAKMN) Climb to 5900 then climbing left turn to 8000 direct PAKMN and track 087° to FSHER and hold.
--	--

AWOS-3 <b>120.025</b>	DENVER APP CON * <b>120.1 290.5</b>	UNICOM <b>122.8 (CTAF) 0</b>
--------------------------	--	---------------------------------



ELEV <b>5442</b>	TDZE <b>5407</b>
------------------	------------------



CATEGORY	A	B	C	D
LPV DA	5657- <sup>3</sup> / <sub>4</sub>		250 (300- <sup>3</sup> / <sub>4</sub> )	NA
LNAV/VNAV DA	5657- <sup>3</sup> / <sub>4</sub>		250 (300- <sup>3</sup> / <sub>4</sub> )	NA
LNAV MDA	5720-1	313 (300-1)	5720- <sup>7</sup> / <sub>8</sub> 313 (300- <sup>7</sup> / <sub>8</sub> )	NA
<b>C</b> CIRCLING	5800-1 358 (400-1)	5900-1 458 (500-1)	5980-1 <sup>1</sup> / <sub>2</sub> 538 (600-1 <sup>1</sup> / <sub>2</sub> )	NA

SW-1, 09 SEP 2021 to 07 OCT 2021

SW-1, 09 SEP 2021 to 07 OCT 2021