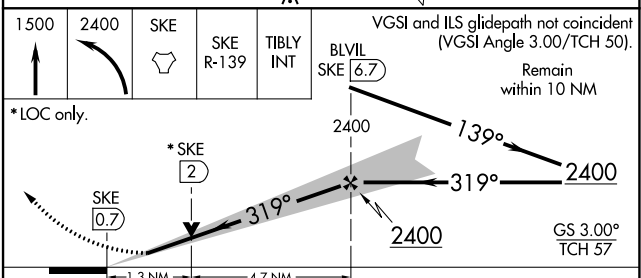
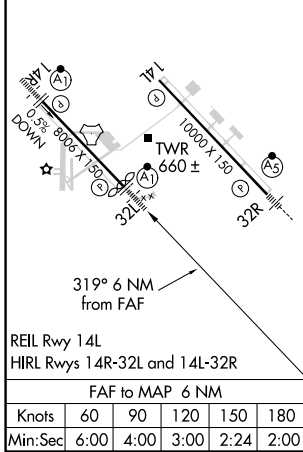
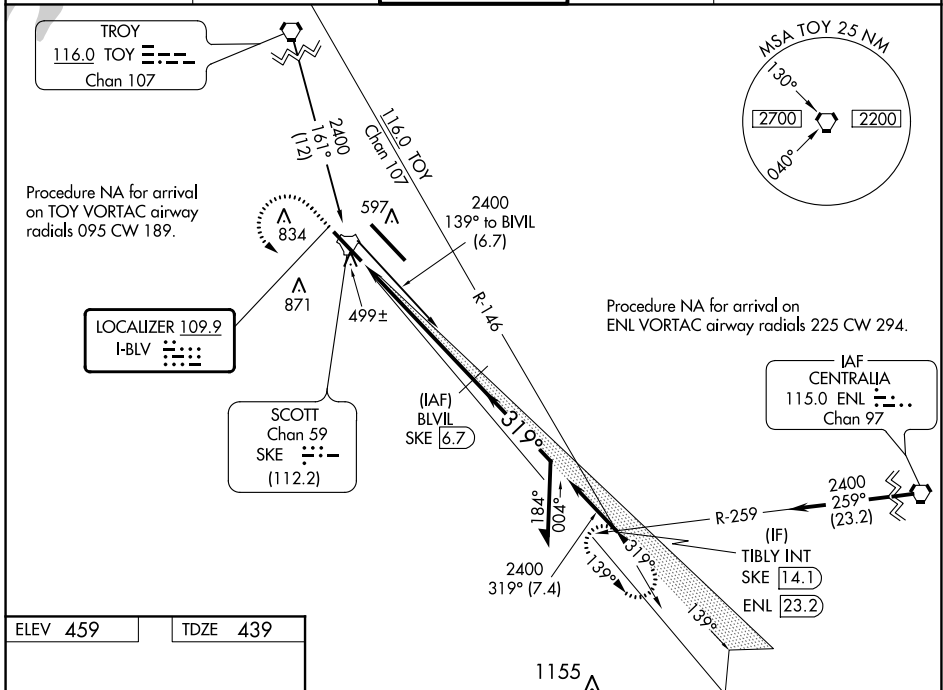


LOC I-BLV <b>109.9</b>	APP CRS <b>319°</b>	Rwy Idg TDZE Apt Elev	<b>7822</b> <b>439</b> <b>459</b>
---------------------------	------------------------	-----------------------------	---

# ILS or LOC RWY 32L

SCOTT AFB/MIDAMERICA ST LOUIS (BLV)

DME required.		ALSF-1		MISSED APPROACH: Climb to 1500 then climbing left turn to 2400 direct SKE TACAN and on SKE R-139 to TIBLY INT/ SKE 14.1 DME and hold.	
<p>⚠ For inoperative ALS, increase S-ILS 32L Cat E visibility to RVR 4000 and increase S-LOC 32L Cat C/D/E visibility to 1 1/2 SM. Procedure turn not authorized for Cat E aircraft. DME from SKE TACAN. Simultaneous reception of I-BLV and SKE DME required. ** RVR 1800 authorized with use of FD or AP or HUD to DA.</p>					
ATIS *	ST LOUIS APP CON	SCOTT TOWER	GND CON	CLNC DEL	
<b>128.7 256.7</b>	<b>125.2 281.5</b>	<b>128.25 253.5</b>	<b>119.2 275.8</b>	<b>119.875 225.4 263.025</b>	



CATEGORY	A	B	C	D	E
S-ILS 32L **	639/24 200 (200-1/2)				
S-LOC 32L	920/24	481 (500-1/2)	920/50 481 (500-1)		
<input checked="" type="checkbox"/> CIRCLING	1000-1 541 (600-1)	1080-1 621 (700-1)	1240-2 1/4 781 (800-2 1/4)	1240-2 1/2 781 (800-2 1/2)	1240-2 3/4 781 (800-2 3/4)

EC-3, 09 SEP 2021 to 07 OCT 2021

EC-3, 09 SEP 2021 to 07 OCT 2021