


LOC I-JDU <b>111.15</b>	APP CRS <b>319°</b>	Rwy ldg <b>10000</b> TDZE <b>442</b> Apt Elev <b>459</b>
----------------------------	------------------------	--

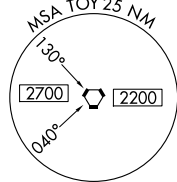
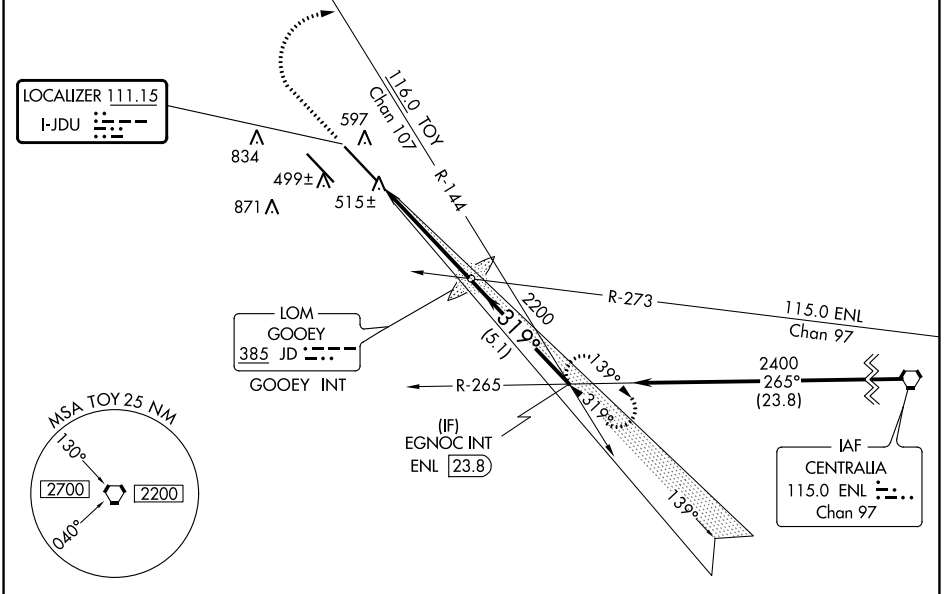
# ILS or LOC RWY 32R

SCOTT AFB/MIDAMERICA ST LOUIS (BLV)

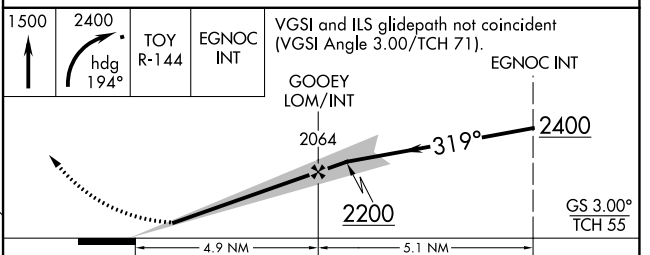
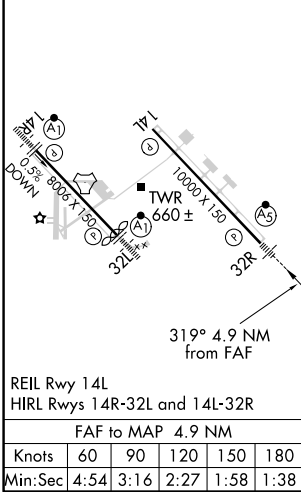
**⚠** When local altimeter setting not received, use St Louis Downtown altimeter setting; increase DA to 684 feet and all MDA 60 feet; increase S-LOC 32R Cat C/D/E visibility to RVR 3500 and increase Circling Cat C/D/E visibility ¼ mile. For inop MALSAR, increase S-ILS 32R Cat ASR E visibility to RVR 4000 and increase S-LOC 32R Cat E visibility to RVR 5000. For inop MALSAR when using St Louis Downtown altimeter setting, increase S-ILS 32R Cat E visibility to RVR 4000 and increase S-LOC 32R Cat E visibility to RVR 6000. \*\* RVR 1800 authorized with use of FD or AP or HUD to DA (NA when using St Louis Downtown altimeter setting).

**MALSAR**  
  
**MISSED APPROACH:**  
 Climb to 1500 then climbing right turn to 2400 on heading 194° and TOY VORTAC R-144 to EGNOC INT and hold.

ATIS ★ <b>128.7 256.7</b>	ST LOUIS APP CON <b>125.2 281.5</b>	SCOTT TOWER <b>128.25 253.5</b>	GND CON <b>119.2 275.8</b>	CLNC DEL <b>119.875 225.4 263.025</b>
------------------------------	--	------------------------------------	-------------------------------	--



ELEV <b>459</b>	TDZE <b>442</b>
-----------------	-----------------



CATEGORY	A	B	C	D	E
S-ILS 32R **	642/24 200 (200-½)				
S-LOC 32R	780/24	338 (400-½)	780/26	338 (400-½)	
<input checked="" type="checkbox"/> CIRCLING	1000-1 541 (600-1)	1080-1 621 (700-1)	1240-2¼ 781 (800-2¼)	1240-2½ 781 (800-2½)	1240-2¾ 781 (800-2¾)

EC-3, 09 SEP 2021 to 07 OCT 2021

EC-3, 09 SEP 2021 to 07 OCT 2021