

WAAS CH <b>50518</b> <b>W32A</b>	APP CRS <b>319°</b>	Rwy Idg <b>10000</b> TDZE <b>442</b> Apt Elev <b>459</b>
--	------------------------	--

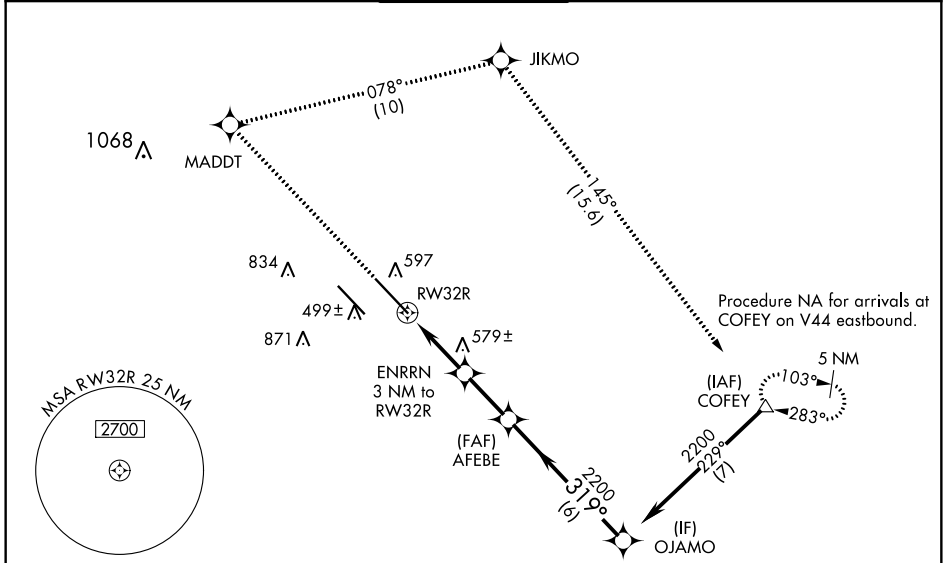
# RNAV (GPS) RWY 32R

SCOTT AFB/MIDAMERICA ST LOUIS (BLV)

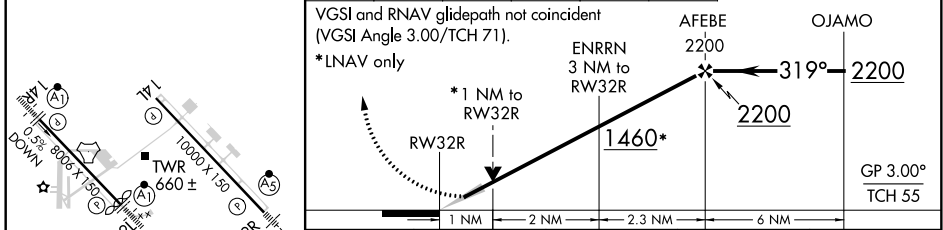
**ASR** For uncompensated Baro-VNAV systems, LNAV/VNAV NA below -18°C (0°F) or above 54°C (130°F). DME/DME RNP-0.3 NA. Baro-VNAV and VDP NA when using St Louis Downtown altimeter setting. When local altimeter setting not received, use St Louis Downtown altimeter setting; increase LPV DA to 684 feet and LNAV/VNAV DA to 846 feet and all MDA 60 feet; increase LNAV/VNAV all Cats visibility and LNAV Cat C/D visibility to RVR 4500; increase Circling Cat C/D visibility ¼ mile. For inoperative MALS, increase LNAV/VNAV all Cats visibility to RVR 6000.

**MALS** MISSED APPROACH: Climb to 2300 direct MADDT and right turn on track 078° to JIKMO and on track 145° to COFEY and hold.

ATIS ★ <b>128.7 256.7</b>	ST LOUIS APP CON <b>125.2 281.5</b>	SCOTT TOWER <b>128.25 253.5</b>	GND CON <b>119.2 275.8</b>	CLNC DEL <b>119.875 225.4 263.025</b>
------------------------------	--	------------------------------------	-------------------------------	--



ELEV 459	TDZE 442	2300	MADDT	JIKMO	COFEY
		↑	✧	tr 078°	✧
				tr 145°	△



CATEGORY	A	B	C	D
LPV DA	642/24		200 (200-½)	
LNAV/VNAV DA	804/40		362 (400-¾)	
LNAV MDA	840/24	398 (400-½)	840/35	398 (400-⅝)
<b>CIRCLING</b>	1000-1 541 (600-1)	1080-1 621 (700-1)	1240-2¼ 781 (800-2¼)	1240-2½ 781 (800-2½)

EC-3, 09 SEP 2021 to 07 OCT 2021

EC-3, 09 SEP 2021 to 07 OCT 2021