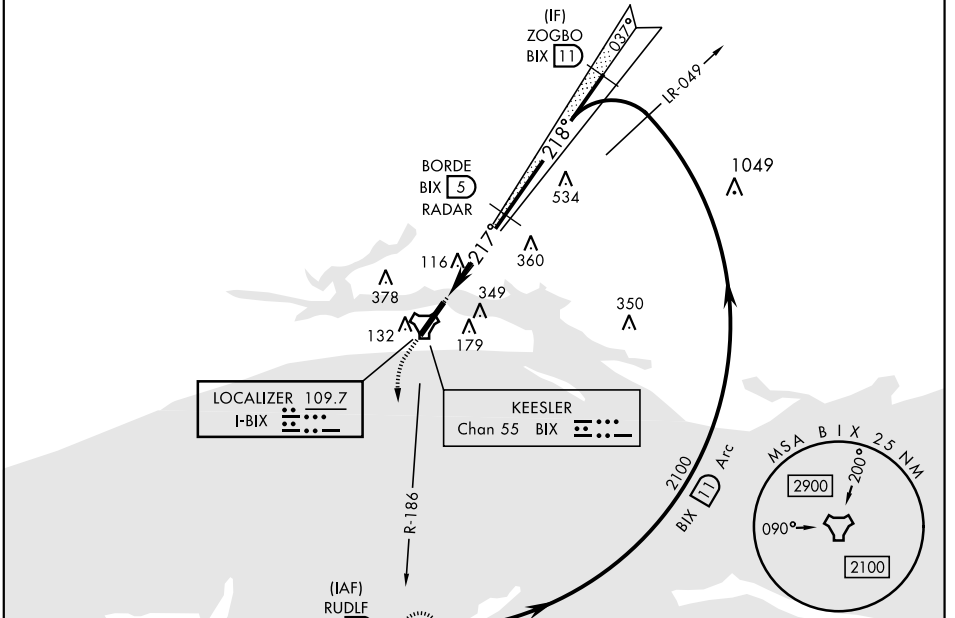


BILOXI, MISSISSIPPI

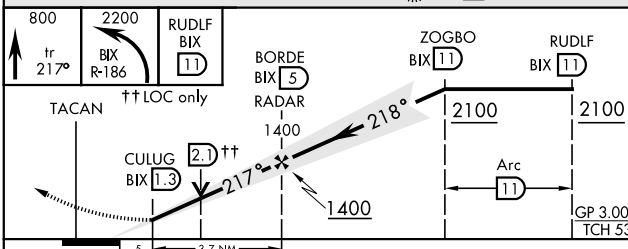
# ILS or LOC RWY 22

LOC I-BIX <b>109.7</b>	APCH CRS <b>217°</b>	Rwy ldg THRE Arprt Elev <b>6630</b> <b>17</b> <b>33</b>	AL-49 [USAF]	KEESLER AFB (KBIX)
RADAR or DME required.		ALSF-1	† MISSED APPROACH: Climb to 800 tracking 217°, upon reaching 800 turn left to intercept BIX TACAN R-186 climbing to 2200 to 11 DME (RUDLF) and hold.	
▼ * When ALS inop, increase CAT AB RVR to 55, vis to 1 mile, CAT CD vis to 1 3/8 miles.				
ATIS <b>281.55</b>	GULFPORT APP CON <b>124.6 354.1</b> (130°- 309°) <b>127.5 254.25</b> (310°- 129°)	KEESLER TOWER * <b>120.75 269.075</b>	GND CON <b>121.8 275.8</b>	CLNC DEL <b>121.8 275.8</b>

† Missed approach requires use of RNAV or ATC RADAR monitoring.  
Non-TACAN equipped aircraft expect ATC instructions.



EMERG SAFE ALT 100 NM 3100



ELEV	33	THRE	17
Rwy 22 2000' non-std apch lgt system		217° 4.2 NM from FAF	
Rwy 4 ldg 6030'		Rwy 22 ldg 6630'	
HIRL Rwy 4-22		REIL Rwy 4	

FAF to MAP 3.7 NM					
Knots	60	90	120	150	180
Min:Sec	3:42	2:28	1:51	1:29	1:14

CATEGORY	A	B	C	D
S-ILS 22	217/40		200	(200-3/4)
S-LOC 22*	500/40	483 (500-3/4)	500/60	483 (500-1 1/2)
CIRCLING	580-1	660-1	680-1 3/4	680-2
	547 (600-1)	627 (700-1)	647 (700-1 3/4)	647 (700-2)

BILOXI, MISSISSIPPI

30° 25' N-88° 55' W

KEESLER AFB (KBIX)

Amtd 1 25MAR21

# ILS or LOC RWY 22

SC-4, 09 SEP 2021 to 07 OCT 2021

SC-4, 09 SEP 2021 to 07 OCT 2021