

BILOXI, MISSISSIPPI

RNAV (GPS) RWY 4

APCH CRS 037°	Rwy Idg 6030
	TDZE 23
	Arprt Elev 33

AL-49 (USAF)

KEESLER AFB (KBIX)

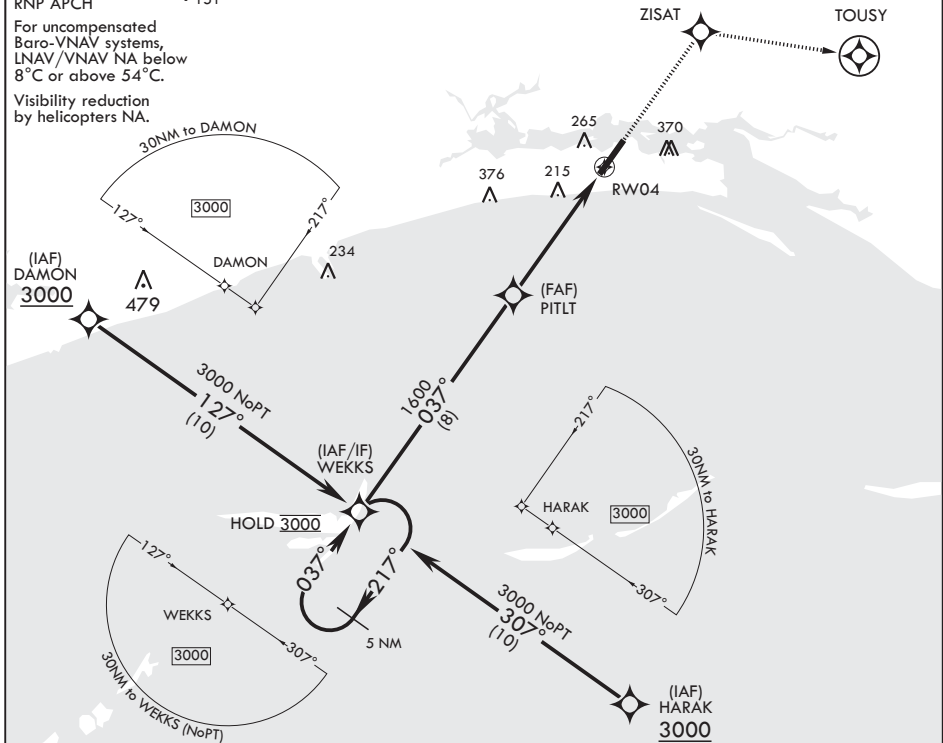
MISSED APPROACH: Climb to 2100 direct ZISAT and track 101° to TOUSY. Expect ATC instructions.

ATIS 281.55	GULFPORT APP CON/DEP CON 124.6 354.1 130° - 309° 127.5 254.25 310° - 129°	TOWER* 120.75 269.075	GND CON 121.8 275.8	CLNC DEL 121.8 275.8
-----------------------	---	---------------------------------	-------------------------------	--------------------------------

RNP APCH • 151

For uncompensated Baro-VNAV systems, LNAV/VNAV NA below 8°C or above 54°C.

Visibility reduction by helicopters NA.



EMERG SAFE ALT 100 NM 3100

ELEV 33 TDZE 23 Rwy 22 2000' non-std apch lgt system Rwy 4 ldg 6030' Rwy 22 ldg 6630'	2100 ZISAT TOUSY tr 101°			
	GP 3.04° TCH 48			
WEEKS 3000		PITLT 1600		
RWY 04		TWR		
*NNAV only *1.2 NM to RWY 04		4.7 NM		
A	B	C	D	
LNAV/VNAV DA	460-1¼	437	(500-1¼)	
LNAV MDA	460/55	437 (500-1)	460-1¼ 437 (500-1¼)	
CIRCLING	580-1 547 (600-1)	660-1 627 (700-1)	680-1¾ 647 (700-1¾) 680-2 647 (700-2)	

Diagram of RWY 22 showing a length of 7630 x 150 feet and a 0.3% DOWN slope. A Tower (TWR) is located near the runway. The diagram also shows the 037° heading to RWY 04.

BILOXI, MISSISSIPPI

30°25'N - 88°55'W

KEESLER AFB (KBIX)

Amdt 1 25MAR21

RNAV (GPS) RWY 4

SC-4, 09 SEP 2021 to 07 OCT 2021

SC-4, 09 SEP 2021 to 07 OCT 2021