

TACAN RWY 22

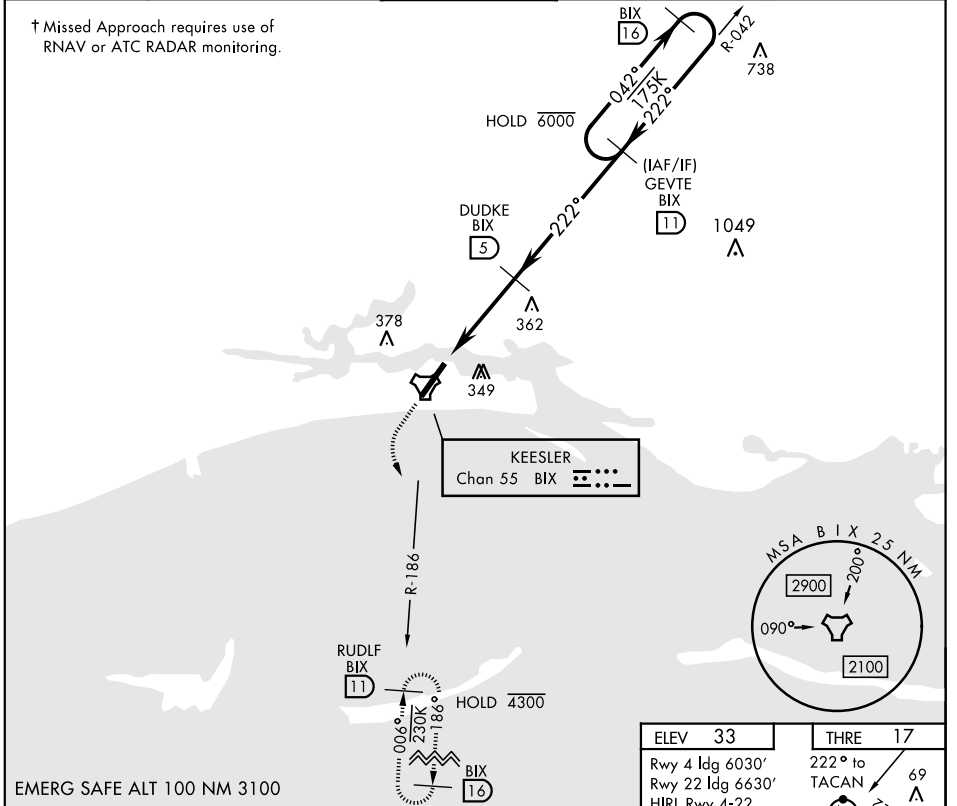
TACAN BIX Chan 55	APCH CRS 222°	Rwy ldg THRE Arprt Elev 6630 17 33	AL-49 [USAF]	KEESLER AFB (KBIX)
----------------------	-------------------------	--	--------------	--------------------

V * When ALS inop, increase CAT AB RVR to 55, vis to 1 mile; CAT CD vis to 1¾ miles.

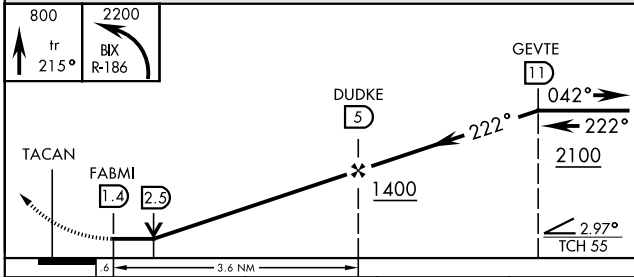
 ALSF-1
A1

 † MISSED APPROACH: Climb to 800 tracking 215°, then turn left to intercept BIX R-186 to 11 DME (RUDLF) climbing to 2200 and hold.

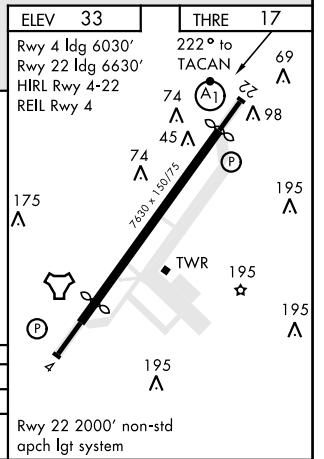
ATIS 281.55	GULFPORT APP CON 124.6 354.1 (130°-309°) 127.5 254.25 (310°-129°)	KEESLER TOWER * 120.75 269.075	GND CON 121.8 275.8	CLNC DEL 121.8 275.8
-----------------------	---	--	-------------------------------	--------------------------------



EMERG SAFE ALT 100 NM 3100



CATEGORY	A	B	C	D
S-22*	620/40 603 (600-¾)	620-1½ 603 (600-1½)	620-1½ 603 (600-1½)	620-1½ 603 (600-1½)
CIRCLING	620-1	660-1	680-1¾	680-2
	587 (600-1)	627 (700-1)	647 (700-1¾)	647 (700-2)



TACAN RWY 22

SC-4, 09 SEP 2021 to 07 OCT 2021

SC-4, 09 SEP 2021 to 07 OCT 2021