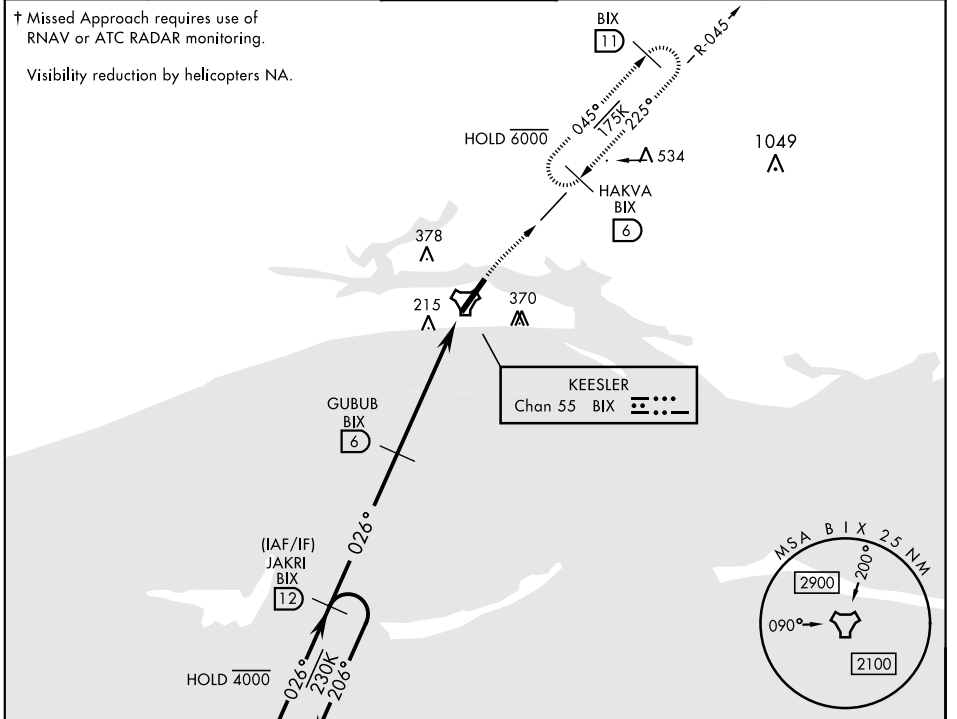


# TACAN RWY 4

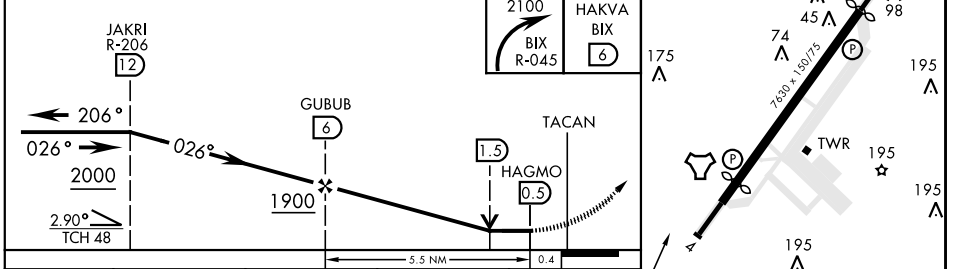
TACAN BIX Chan 55	APCH CRS <b>026°</b>	Rwy ldg TDZE Arprt Elev <b>6030</b> <b>23</b> <b>33</b>	AL-49 [USAF]	KEESLER AFB (KBIX)
----------------------	-------------------------	--	--------------	--------------------

† MISSED APPROACH: Turn right climbing to 2100 to intercept BIX TACAN R-045 to 6 DME (HAKVA) and hold.

ATIS <b>281.55</b>	GULFPORT APP CON <b>124.6 354.1</b> (130°-309°) <b>127.5 254.25</b> (310°-129°)	KEESLER TOWER ★ <b>120.75 269.075</b>	GND CON <b>121.8 275.8</b>	CLNC DEL <b>121.8 275.8</b>
-----------------------	---	--	-------------------------------	--------------------------------



ELEV 33	TDZE 23
Rwy 4 ldg 6030'	Rwy 22 ldg 6630'



CATEGORY	A	B	C	D
S-4	520/55 497 (500-1)		520-1 3/8 497 (500-1 3/8)	
◉ CIRCLING	580-1 547 (600-1)	660-1 627 (700-1)	680-1 3/4 647 (700-1 3/4)	680-2 647 (700-2)

# TACAN RWY 4

SC-4, 09 SEP 2021 to 07 OCT 2021

SC-4, 09 SEP 2021 to 07 OCT 2021

HIRL Rwy 4-22  
REIL Rwy 4  
Rwy 22 2000' non-std  
apch lgt system