

TACAN-A

TACAN BIX Chan 55	APCH CRS 303°	Rwy ldg THRE Arprt Elev N/A N/A 33
-----------------------------	-------------------------	--

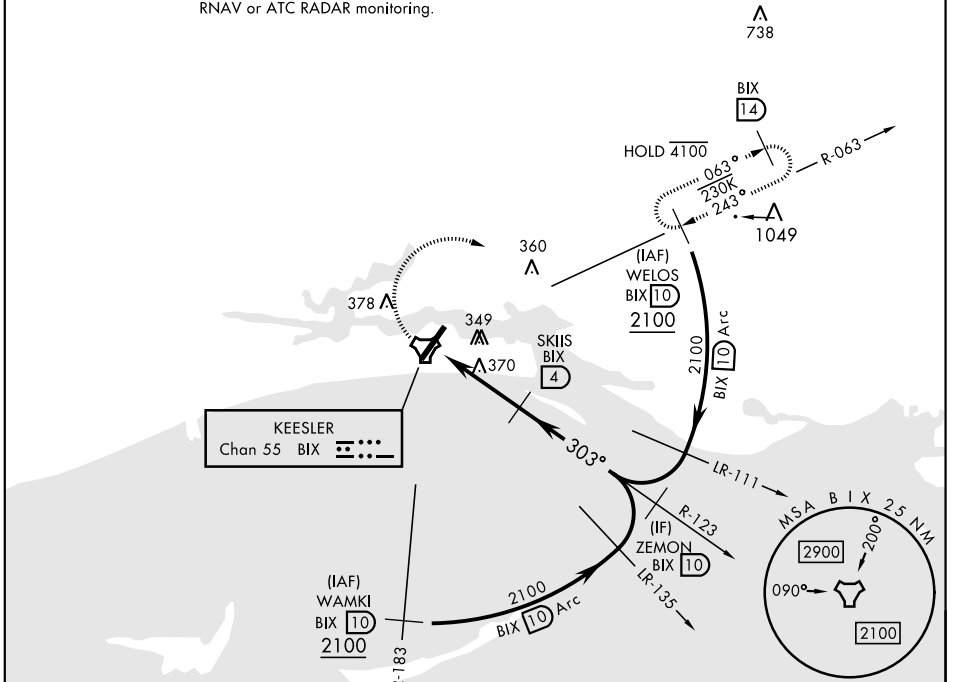
AL-49 [USAF]

KEESLER AFB (KBIX)

† MISSED APPROACH: Climb tracking 303° to BIX TACAN then right turn to intercept BIX R-063 climbing to 2100 to 10 DME (WELOS) and hold.

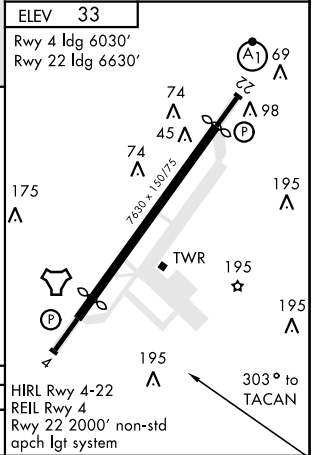
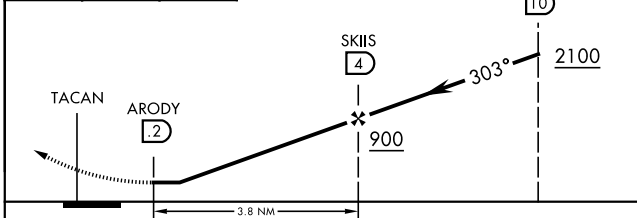
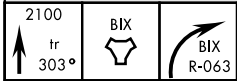
ATIS 281.55	GULFPORT APP CON 124.6 354.1 (130°- 309°) 127.5 254.25 (310°- 129°)	KEESLER TOWER ★ 120.75 269.075	GND CON 121.8 275.8	CLNC DEL 121.8 275.8
-----------------------	---	--	-------------------------------	--------------------------------

† Missed approach requires use of RNAV or ATC RADAR monitoring.



KEESLER
Chan 55 BIX

EMERG SAFE ALT 100 NM 3100



CATEGORY	A	B	C	D
CIRCLING	620-1 587 (600-1)	660-1 627 (700-1)	680-1 ¾ 647 (700-1 ¾)	680-2 647 (700-2)

TACAN-A

SC-4, 09 SEP 2021 to 07 OCT 2021

SC-4, 09 SEP 2021 to 07 OCT 2021