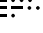



(BZN6.BZN) 18144

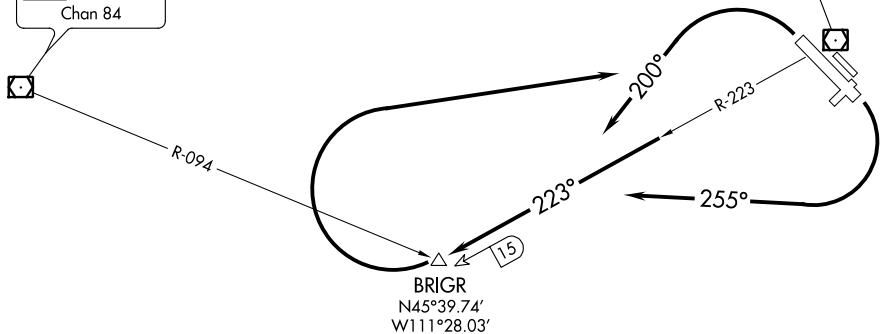
# BOZEMAN SIX DEPARTURE (OBSTACLE)

BOZEMAN YELLOWSTONE INTL (BZN)  
AL-59 (FAA) BOZEMAN, MONTANA

ATIS  
135.425  
GND CON  
121.8  
BOZEMAN TOWER ★  
118.2 (CTAF)  
BIG SKY DEP CON ★  
118.975 226.675  
GREAT FALLS RADIO  
122.5

BOZEMAN  
112.4 BZN   
Chan 71  
N45°47.03'-W111°09.33'  
L-13, H-1

WHITEHALL  
113.7 HIA   
Chan 84



NW-1, 09 SEP 2021 to 07 OCT 2021

NW-1, 09 SEP 2021 to 07 OCT 2021

### TAKEOFF MINIMUMS

Rwys 3, 11, 21, 29: NA - ATC.  
Rwys 12, 30: Standard

### TAKEOFF OBSTACLE NOTES

Rwy 30: Pole 641' from DER, 622' left of centerline, 35' AGL/4452' MSL.

NOTE: Chart not to scale.

### DEPARTURE ROUTE DESCRIPTION

TAKEOFF RUNWAY 12: Climbing right turn heading 255° to intercept BZN R-223 to BRIGR, then continue climbing right turn direct BZN VOR/DME, cross BZN VOR/DME at or above MCA or MEA for route of flight.

TAKEOFF RUNWAY 30: Climbing left turn heading 200° to intercept BZN R-223 to BRIGR, then continue climbing right turn direct BZN VOR/DME, cross BZN VOR/DME at or above MCA or MEA for route of flight.

# BOZEMAN SIX DEPARTURE (OBSTACLE)

(BZN6.BZN) 24MAY18

BOZEMAN, MONTANA  
BOZEMAN YELLOWSTONE INTL (BZN)