

# ILS or LOC RWY 12

BOZEMAN YELLOWSTONE INTL (BZN)

LOC I-BZN <b>109.3</b>	APP CRS <b>123°</b>	Rwy Idg <b>8994</b>
		TDZE <b>4443</b>
		Apt Elev <b>4473</b>

RADAR required for procedure entry at BRGR.

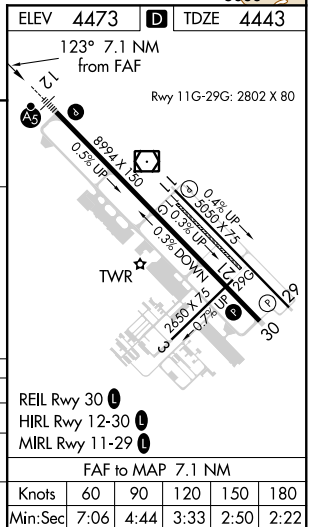
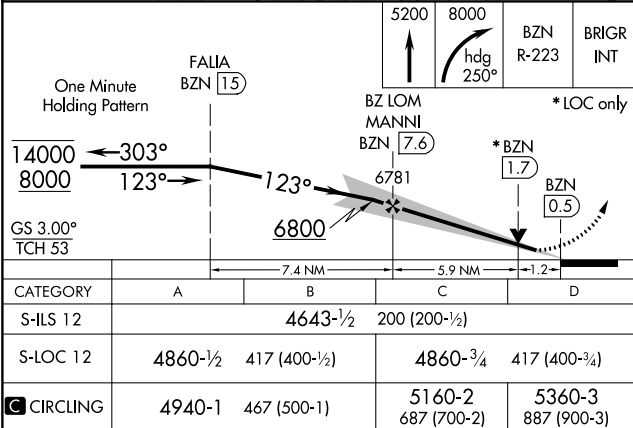
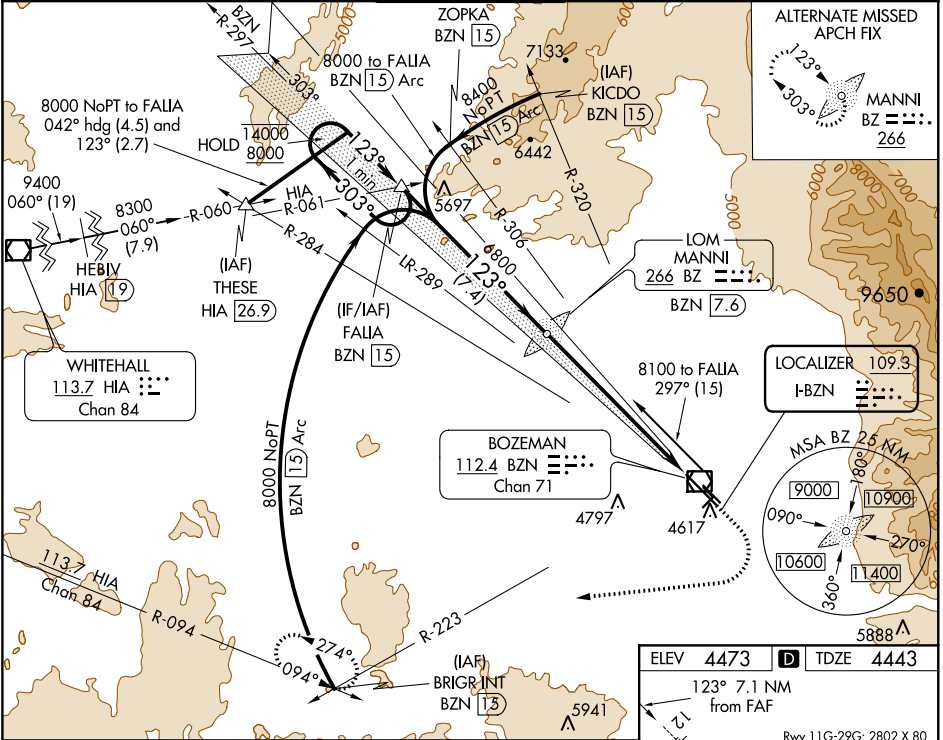
**⚠** Circling NA to Rwsy 3-21 and 11-29.

**⌚** -31°C



MISSED APPROACH: Climb to 5200 then climbing right turn to 8000 on heading 250° and on BZN VOR/DME R-223 to BRGR INT/BZN 15 DME and hold.

ATIS <b>135.425</b>	BIG SKY APP CON* <b>118.975 226.675</b>	BOZEMAN TOWER* <b>118.2 (CTAF) 0</b>	GND CON <b>121.8</b>	UNICOM <b>122.95</b>
------------------------	--	---	-------------------------	-------------------------



NW-1, 09 SEP 2021 to 07 OCT 2021

NW-1, 09 SEP 2021 to 07 OCT 2021