

APP CRS <b>303°</b>	Rwy Idg TDZE Apt Elev	<b>N/A</b> <b>N/A</b> <b>4473</b>
------------------------	-----------------------------	---

# RNAV (GPS)-A

## BOZEMAN YELLOWSTONE INTL (BZN)

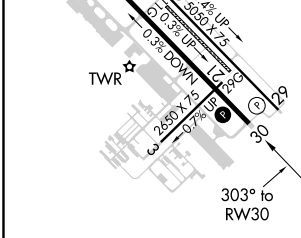
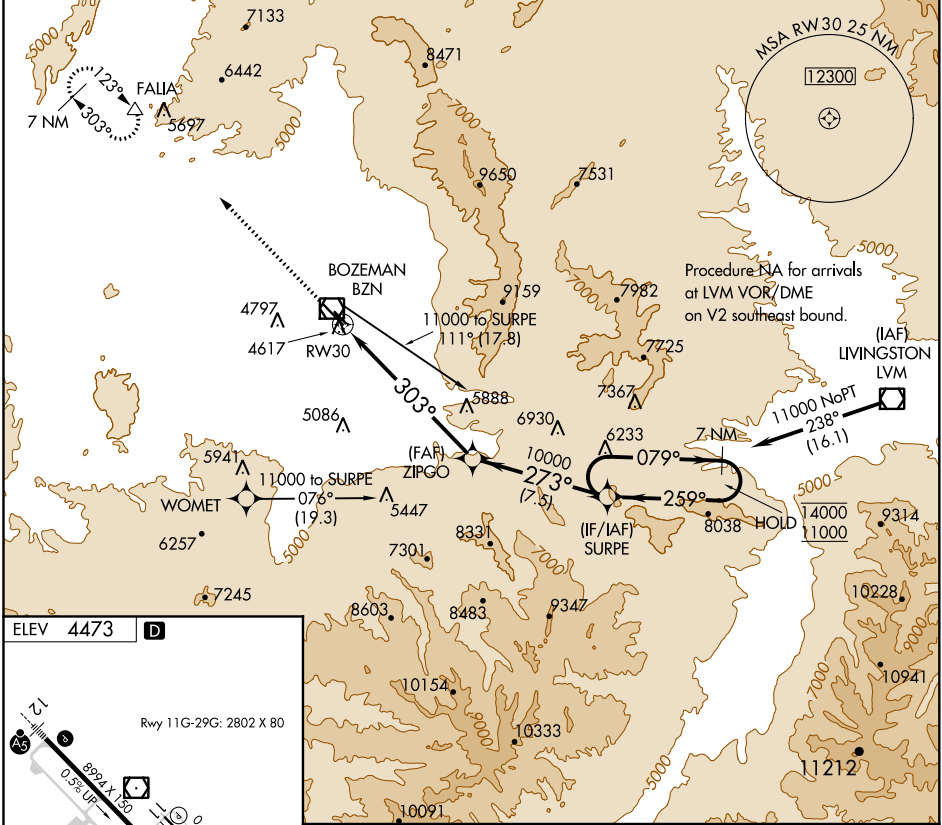
RNP APCH.

MISSED APPROACH: Climb to 10000 direct FALIA and hold, continue climb-in-hold to 10000.

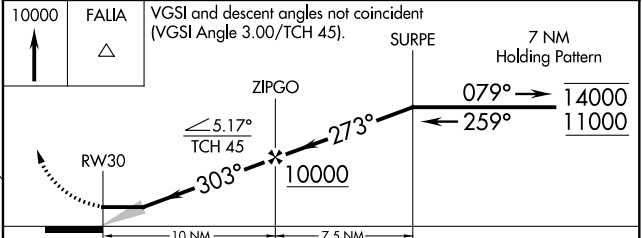
⚠ Circling NA to Rwys 3-21 and 11-29.

❄ -31°C

ATIS <b>135.425</b>	BIG SKY APP CON * <b>118.975 226.675</b>	BOZEMAN TOWER * <b>118.2 (CTAF) 0</b>	GND CON <b>121.8</b>	UNICOM <b>122.95</b>
------------------------	---	--	-------------------------	-------------------------



REIL Rwy 30	HIRL Rwy 12-30	MIRL Rwy 11-29
-------------	----------------	----------------



CATEGORY	A	B	C	D
<b>C</b> CIRCLING	6020-1¼ 1547 (1600-1¼)	6020-1½ 1547 (1600-1½)	6020-3 1547 (1600-3)	6300-3 1827 (1900-3)

NW-1, 09 SEP 2021 to 07 OCT 2021

NW-1, 09 SEP 2021 to 07 OCT 2021