

APP CRS	Rwy Idg	8994
123°	TDZE	4443
	Apt Elev	4473

RNAV (RNP) Z RWY 12

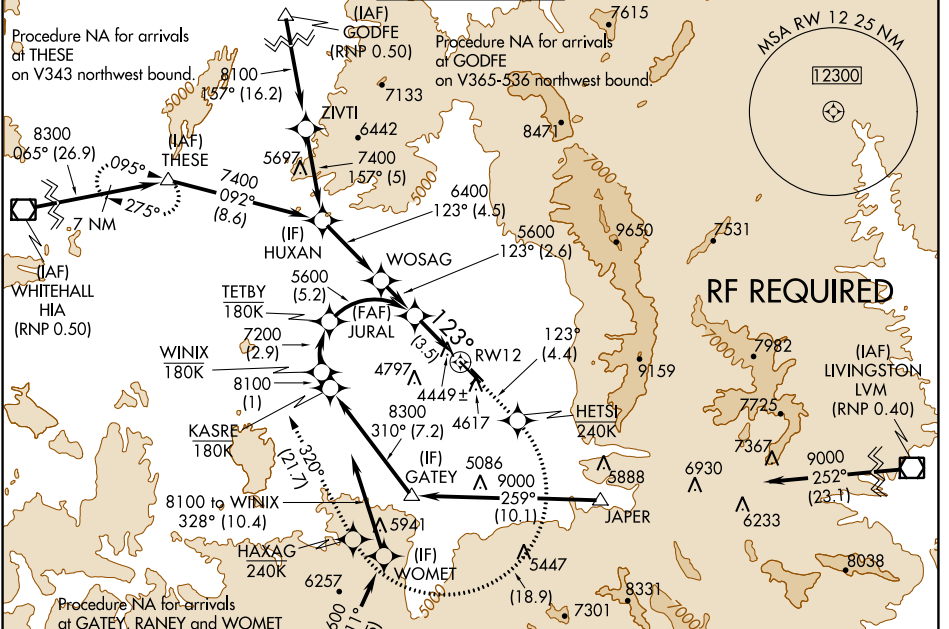
BOZEMAN YELLOWSTONE INTL (BZN)

GPS required. For uncompensated Baro-VNAV systems, procedure NA below -23°C (-11°F) or above 49°C (121°F). When VGSi inop, procedure NA at night. For inoperative MALSR increase RNP 0.30 visibility to 1/2 all Cats.

MALSR

MISSED APPROACH: Climb to 8300 on track 123° to HETSI, and right turn to HAXAG, and on track 320° to THESE and hold.

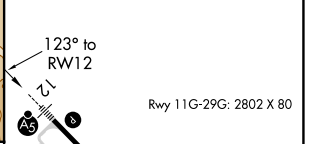
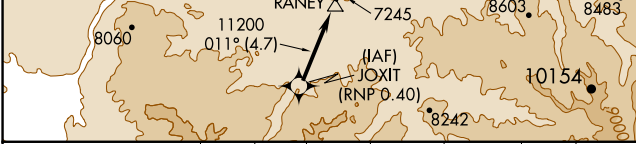
ATIS 135.425	BIG SKY APP CON * 118.975 226.675	BOZEMAN TOWER * 118.2 (CTAF)	GND CON 121.8	UNICOM 122.95
------------------------	---	--	-------------------------	-------------------------



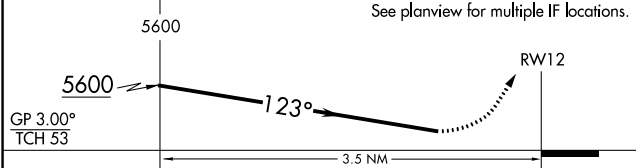
NW-1, 09 SEP 2021 to 07 OCT 2021

NW-1, 09 SEP 2021 to 07 OCT 2021

ELEV 4473	D	TDZE 4443
-----------	----------	-----------

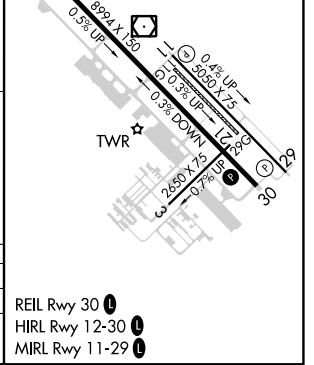


JURAL	8300	HETSJ	HAXAG	THESE
	↑	tr 123°	↘	tr 320°



CATEGORY	A	B	C	D
RNP 0.30 DA		4791-1	348(400-1)	

AUTHORIZATION REQUIRED



- REIL Rwy 30
- HIRL Rwy 12-30
- MIRL Rwy 11-29