

(TEERX4.TEERX) 18144

TEERX FOUR DEPARTURE (RNAV)

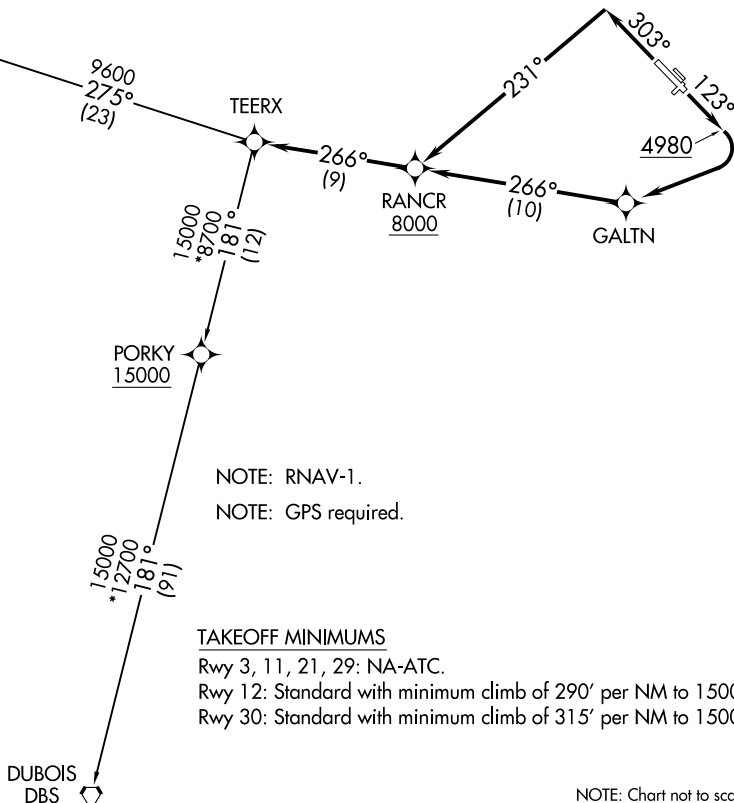
BOZEMAN YELLOWSTONE INTL (BZN)
BOZEMAN, MONTANA

AL-59 (FAA)

TOP ALTITUDE:
16000

ATIS
135.425
GND CON
121.8
BOZEMAN TOWER*
118.2 (CTAF)
BIG SKY DEP CON*
118.975 226.675
GREAT FALLS RADIO
122.5

WHITEHALL
HIA



NOTE: RNAV-1.
NOTE: GPS required.

TAKEOFF MINIMUMS

Rwy 3, 11, 21, 29: NA-ATC.

Rwy 12: Standard with minimum climb of 290' per NM to 15000.

Rwy 30: Standard with minimum climb of 315' per NM to 15000.

NOTE: Chart not to scale.

DEPARTURE ROUTE DESCRIPTION

TAKEOFF RUNWAY 12: Climb heading 123° to 4980, then climbing right turn direct GALTN, then on track 266° to cross RANCR at or above 8000, then on track 266° to TEERX, thence. . . .

TAKEOFF RUNWAY 30: Climb heading 303° to intercept course 231° to cross RANCR at or above 8000, then on track 266° to TEERX, thence. . . .

. . . .(transition). Maintain 16000, expect filed altitude 10 minutes after departure.

DUBOIS TRANSITION (TEERX4.DBS)

WHITEHALL TRANSITION (TEERX4.HIA)

TEERX FOUR DEPARTURE (RNAV)

(TEERX4.TEERX) 24MAY18

BOZEMAN, MONTANA
BOZEMAN YELLOWSTONE INTL (BZN)

NW-1, 09 SEP 2021 to 07 OCT 2021

NW-1, 09 SEP 2021 to 07 OCT 2021