

THRNE THREE ARRIVAL (RNAV) Arrival Routes

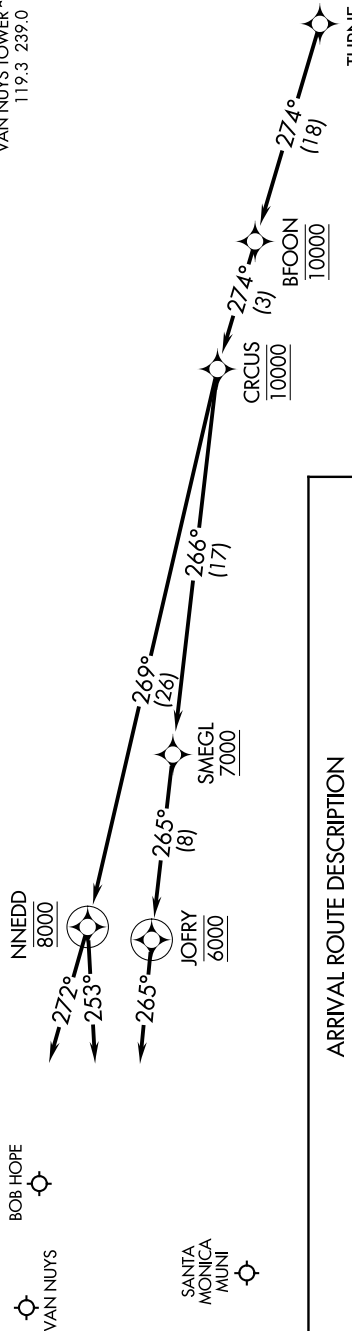
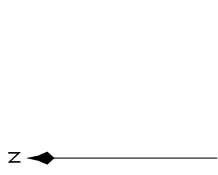
AL-67 (FAA)

BURBANK, CALIFORNIA

13-SW-3, 09 SEP 2021 to 07 OCT 2021

SOCAL APP CON
126.7 370.95
BUR D-ATIS
134.5
SMO ATIS
119.15
VNY ATIS
127.55
BURBANK TOWER
118.7 254.3
SANTA MONICA TOWER*
120.1 257.8
VAN NUYS TOWER**
119.3 239.0

NOTE: RADAR required.
NOTE: RNAV 1.
NOTE: DME/DME/IRU or GPS required.
NOTE: Turbojet and turboprop aircraft only.
NOTE: Expect local area altimeter setting reaching FL200.



ARRIVAL ROUTE DESCRIPTION

LANDING KBUR: From THRNE on track 274° to cross BFOON at 10000, then on track 274° to cross CRUCS at 10000, then on track 269° to cross NNEDD at 8000, then on track 253°. Expect RADAR vectors to final approach course.

LANDING KSMO: From THRNE on track 274° to cross BFOON at 10000, then on track 274° to cross CRUCS at 10000, then on track 266° to cross SMEGL at or above 7000, then on track 265° to cross JOFRY at 6000, then on track 265°. Expect RADAR vectors to final approach course.

LANDING KVNY: From THRNE on track 274° to cross BFOON at 10000, then on track 274° to cross CRUCS at 10000, then on track 269° to cross NNEDD at 8000, then on track 272°. Expect RADAR vectors to final approach course.

NOTE: Chart not to scale.

THRNE THREE ARRIVAL (RNAV) Arrival Routes

BURBANK, CALIFORNIA

SW-3, 09 SEP 2021 to 07 OCT 2021