

LOC I-HWA 110.15	APP CRS 303°	Rwy Idg TDZE Apt Elev	10201 1380 1384
----------------------------	------------------------	-----------------------------	--

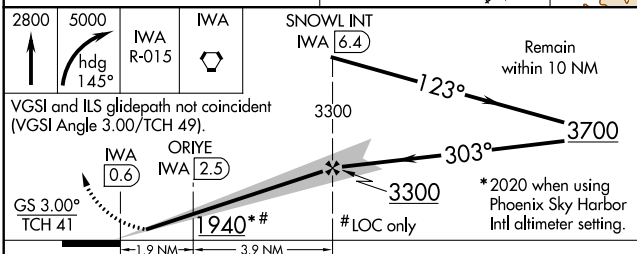
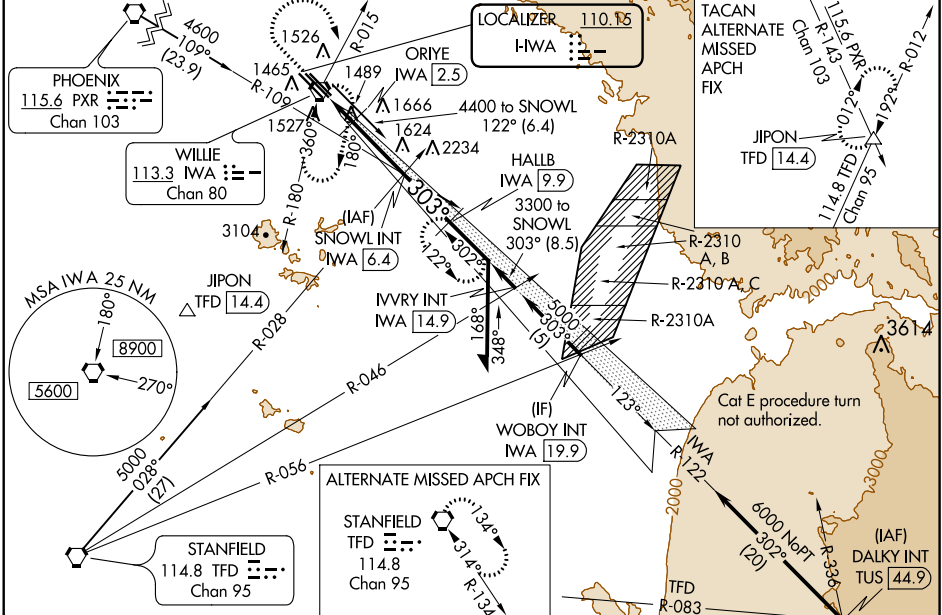
ILS or LOC RWY 30C

PHOENIX-MESA GATEWAY (IWA)

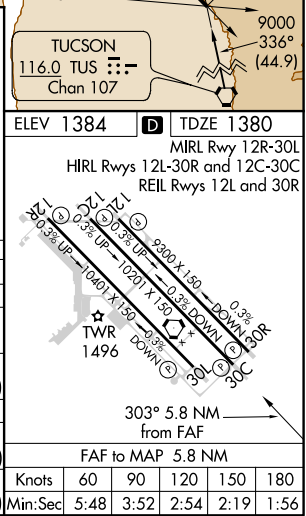
⚠ When local altimeter setting not received, use Phoenix Sky Harbor Intl altimeter setting and increase S-ILS DA to 1660 feet and all MDA 80 feet, increase S-ILS 30C, S-LOC 30C all Cats and Circling Cats C/D/E visibility ¼ SM.

MISSED APPROACH: Climb to 2800 then climbing right turn to 5000 via heading 145° and IWA VORTAC R-015 to IWA VORTAC and hold, continue climb-in-hold to 5000 (TACAN aircraft continue via IWA VORTAC R-122 to HALLB/9.9 DME and hold, continue climb-in-hold to 5000, hold SE, LT, 302° inbound).

ATIS ★ 133.5 270.275	PHOENIX APP CON 124.9 353.8	GATEWAY TOWER ★ 120.6 (CTAF) 289.4	GND CON 128.25 275.8	CLNC DEL 135.05
--------------------------------	---------------------------------------	--	--------------------------------	---------------------------



2800	5000	IWA R-015	IWA	SNOWL INT IWA [6.4]	Remain within 10 NM
VGSI and ILS glidepath not coincident (VGSI Angle 3.00/TCH 49).					
GS 3.00° TCH 41	IWA [0.6]	ORIE IWA [2.5]	3300	3700	*2020 when using Phoenix Sky Harbor Intl altimeter setting.
	1.9 NM	3.9 NM	# LOC only		
CATEGORY	A	B	C	D	E
S-ILS 30C		1580-¾	200 (200-¾)		
S-LOC 30C	1940-1	560 (600-1)	1940-1½ 560 (600-1½)	1940-1¾ 560 (600-1¾)	1940-2 560 (600-2)
CIRCLING	1940-1	556 (600-1)	1940-1½ 556 (600-1½)	2000-2 616 (700-2)	2020-2¼ 636 (700-2¼)
ORIE FIX MINIMUMS					
S-LOC 30C	1800-1	420 (500-1)	1800-1¼ 420 (500-1¼)	1800-1½ 420 (500-1½)	
CIRCLING	1880-1	496 (500-1)	1880-1½ 496 (500-1½)	2000-2 616 (700-2)	2020-2¼ 636 (700-2¼)



SW-4, 09 SEP 2021 to 07 OCT 2021

SW-4, 09 SEP 2021 to 07 OCT 2021