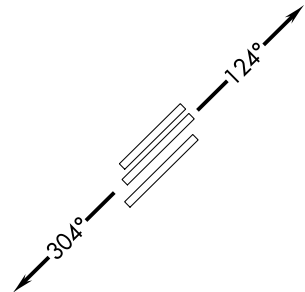


SW-4, 09 SEP 2021 to 07 OCT 2021

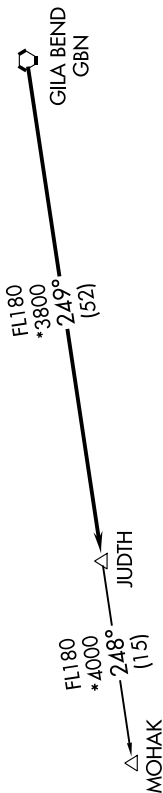
**TOP ALTITUDE:
ASSIGNED BY ATC**



ATIS *
133.5 270.275
CLNC DEL
135.05
GND CON
128.25 275.8
GATEWAY TOWER *
120.6 289.4
PHOENIX DEP CON
124.9 353.8

RNAV 1.
NOTE: Turboprops and turboprops only.
NOTE: RADAR required.
NOTE: GPS required.
NOTE: Aircraft departing KGEU and KGYR ATC assigned only.

TAKEOFF MINIMUMS
Rwys 12L/C/R: Standard with a minimum climb of 250' per NM to 3100.
Rwys 30L/C/R: Standard.



DEPARTURE ROUTE DESCRIPTION

TAKEOFF RUNWAYS 12L/C/R: Climb heading 124° or as assigned by ATC, thence. . . .
 TAKEOFF RUNWAYS 30L/C/R: Climb heading 304° or as assigned by ATC, thence. . . .
 . . . expect RADAR vectors to GBN VORTAC, then on track 249° to JUDTH, then on (transition).
 Maintain ATC assigned altitude, expect filed altitude 3 minutes after departure.

MOHAK TRANSITION (JUDTH7.MOHAK)

NOTE: Chart not to scale.

SW-4, 09 SEP 2021 to 07 OCT 2021