

WAAS CH 93525 W30B	APP CRS 303°	Rwy Idg 10401 TDZE 1374 Apt Elev 1384
--	------------------------	--

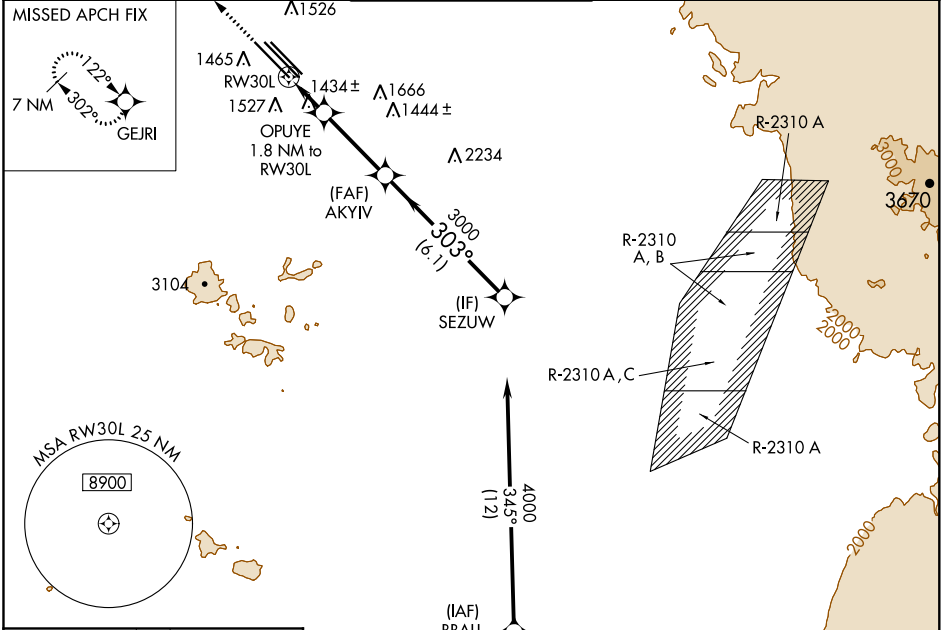
RNAV (GPS) RWY 30L

PHOENIX-MESA GATEWAY (IWA)

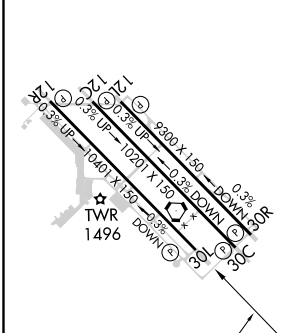
⚠ DME/DME RNP-0.3 NA. When local altimeter setting not received, use Phoenix Sky Harbor Intl altimeter setting and increase all MDA 80 feet; increase LP and LNAV Cat C, D and E visibility 1/8 SM and Circling Cats D, E visibility 1/4 SM. VDP NA with Phoenix Sky Harbor Intl altimeter setting.

MISSED APPROACH: Climb to 4300 direct GEJRI and hold.

ATIS ★ 133.5 270.275	PHOENIX APP CON 124.9 353.8	GATEWAY TOWER ★ 120.6 (CTAF) 289.4	GND CON 128.25 275.8	CLNC DEL 135.05
--------------------------------	---------------------------------------	--	--------------------------------	---------------------------



ELEV 1384	D	TDZE 1374
-----------	----------	-----------



4300	GEJRI	VGSI and RNAV descent angles not coincident (VGSI Angle 3.00/TCH 60).	SEZUW																								
4000	(IAF) BBALL																										
4000	TOTEC																										
3000	OPUYE	AKYV	4000																								
2000	RW30L																										
<table border="1"> <tr> <td>CATEGORY</td> <td>A</td> <td>B</td> <td>C</td> <td>D</td> <td>E</td> </tr> <tr> <td>LP MDA</td> <td>1800-1</td> <td>426 (500-1)</td> <td>1800-1½</td> <td>426 (500-1½)</td> <td></td> </tr> <tr> <td>LNAV MDA</td> <td>1800-1</td> <td>426 (500-1)</td> <td>1800-1½</td> <td>426 (500-1½)</td> <td></td> </tr> <tr> <td>CIRCLING</td> <td>1880-1</td> <td>496 (500-1)</td> <td>1880-1½ 496 (500-1½)</td> <td>2000-2 616 (700-2)</td> <td>2040-2½ 656 (700-2½)</td> </tr> </table>				CATEGORY	A	B	C	D	E	LP MDA	1800-1	426 (500-1)	1800-1½	426 (500-1½)		LNAV MDA	1800-1	426 (500-1)	1800-1½	426 (500-1½)		CIRCLING	1880-1	496 (500-1)	1880-1½ 496 (500-1½)	2000-2 616 (700-2)	2040-2½ 656 (700-2½)
CATEGORY	A	B	C	D	E																						
LP MDA	1800-1	426 (500-1)	1800-1½	426 (500-1½)																							
LNAV MDA	1800-1	426 (500-1)	1800-1½	426 (500-1½)																							
CIRCLING	1880-1	496 (500-1)	1880-1½ 496 (500-1½)	2000-2 616 (700-2)	2040-2½ 656 (700-2½)																						

MIRL Rwy 12R-30L
HIRL Rwy 12L-30R and 12C-30C
REIL Rwy 12L and 30R

SW-4, 09 SEP 2021 to 07 OCT 2021

SW-4, 09 SEP 2021 to 07 OCT 2021