

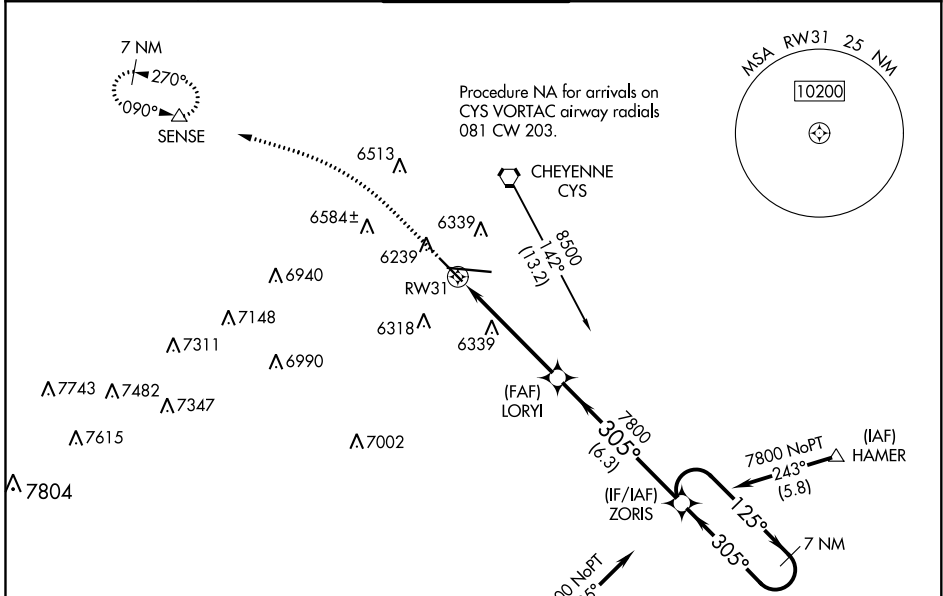
WAAS CH 99609 W31A	APP CRS 305°	Rwy Idg TDZE Apt Elev	4880 6147 6160
----------------------------------------	------------------------	-----------------------------	-------------------------------------------

RNAV (GPS) RWY 31

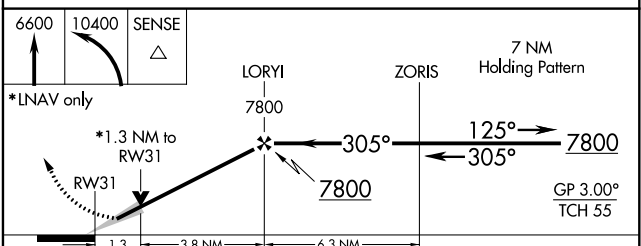
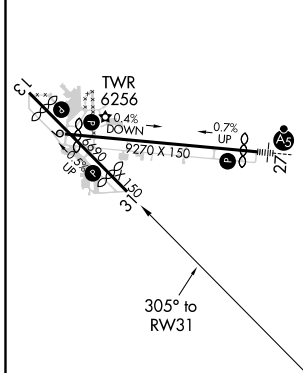
CHEYENNE RGNL/JERRY OLSON FLD (C'YS)

RNP APCH.	MISSED APPROACH: Climb to 6600, then climbing left turn to 10400 direct SENSE and hold, continue climb-in-hold to 10400.		
T For uncompensated Baro-VNAV systems, LNAV/VNAV NA below -24°C or above 45°C.			
ASR/PAR			

ATIS 134.425 278.3	CHEYENNE APP CON* 124.55 263.075	CHEYENNE TOWER* 118.7(CTAF) 257.8	GND CON 121.9 254.275	UNICOM 122.95
------------------------------	--------------------------------------------	---------------------------------------------	---------------------------------	-------------------------



ELEV 6160	D	TDZE 6147
-----------	----------	-----------



CATEGORY	A	B	C	D
LPV DA		6397- ³ / ₄	250 (300- ³ / ₄)	
LNAV/VNAV DA		6458- ⁷ / ₈	311 (300- ⁷ / ₈)	
LNAV MDA	6600-1	453 (500-1)	6600-1 ³ / ₈	453 (500-1 ³ / ₈)
C CIRCLING	6640-1	480 (500-1)	6900-2 740 (800-2)	6920-2 ¹ / ₂ 760 (800-2 ¹ / ₂)

REIL Rwy 9, 13 and 31

HIRL Rwy 9-27

MIRL Rwy 13-31

NW-1, 09 SEP 2021 to 07 OCT 2021

NW-1, 09 SEP 2021 to 07 OCT 2021