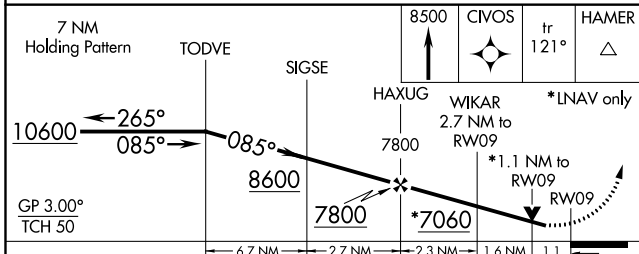
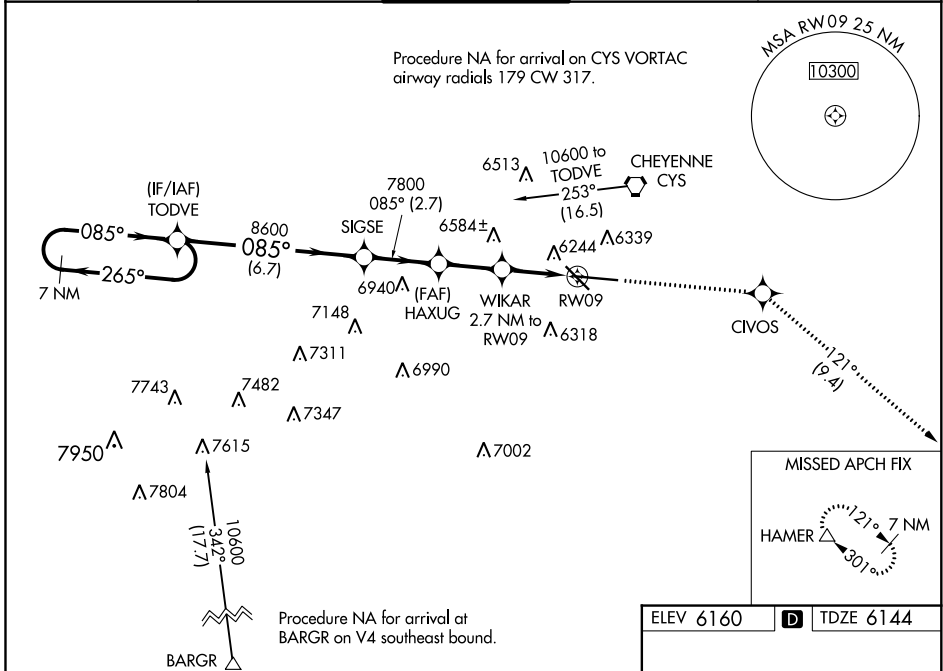


WAAS CH 73009 W09A	APP CRS 085°	Rwy Idg TDZE Apt Elev	7985 6144 6160
--	------------------------	-----------------------------	---

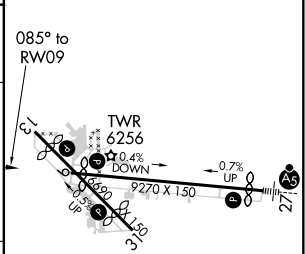
RNAV (GPS) RWY 9
CHEYENNE RGNL/JERRY OLSON FLD (CYS)

<p>⚠ For uncompensated Baro-VNAV systems, LNAV/VNAV NA below -27°C (-16°F) or above 36°C (96°F). DME/DME RNP-0.3 NA. Rwy 9 helicopter visibility reduction below ¾ SM NA.</p>	<p>MISSED APPROACH: Climb to 8500 direct CIVOS and on track 121° to HAMER and hold.</p>		
	<p>ATIS 134.425 278.3</p>	<p>CHEYENNE APP CON* 124.55 263.075</p>	<p>CHEYENNE TOWER* 118.7(CTAF) 0 257.8</p>

ATIS 134.425 278.3	CHEYENNE APP CON* 124.55 263.075	CHEYENNE TOWER* 118.7(CTAF) 0 257.8	GND CON 121.9 254.275	UNICOM 122.95
------------------------------	--	--	---------------------------------	-------------------------



ELEV 6160	D TDZE 6144
-----------	--------------------



CATEGORY	A	B	C	D
LPV DA	6473-1¼		329 (400-1¼)	
LNAV/VNAV DA	6543-1½		399 (400-1½)	
LNAV MDA	6540-1		396 (400-1)	
C CIRCLING	6640-1 480 (500-1)		6900-2 740 (800-2)	
			6540-1¼ 396 (400-1¼)	
			6940-2½ 780 (800-2½)	

REIL Rwys 9, 13, and 31 **⓪**
HIRL Rwy 9-27 **⓪**
MIRL Rwy 13-31 **⓪**

NW-1, 09 SEP 2021 to 07 OCT 2021

NW-1, 09 SEP 2021 to 07 OCT 2021