

VORTAC CYS <b>113.1</b> Chan 78	APP CRS <b>196°</b>	Rwy Idg TDZE Apt Elev <b>N/A</b> <b>N/A</b> <b>6160</b>
---------------------------------------	------------------------	--

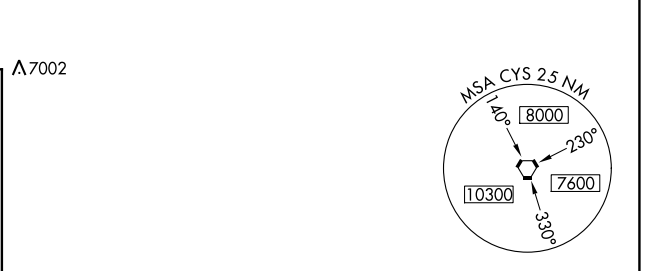
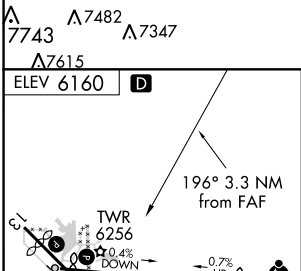
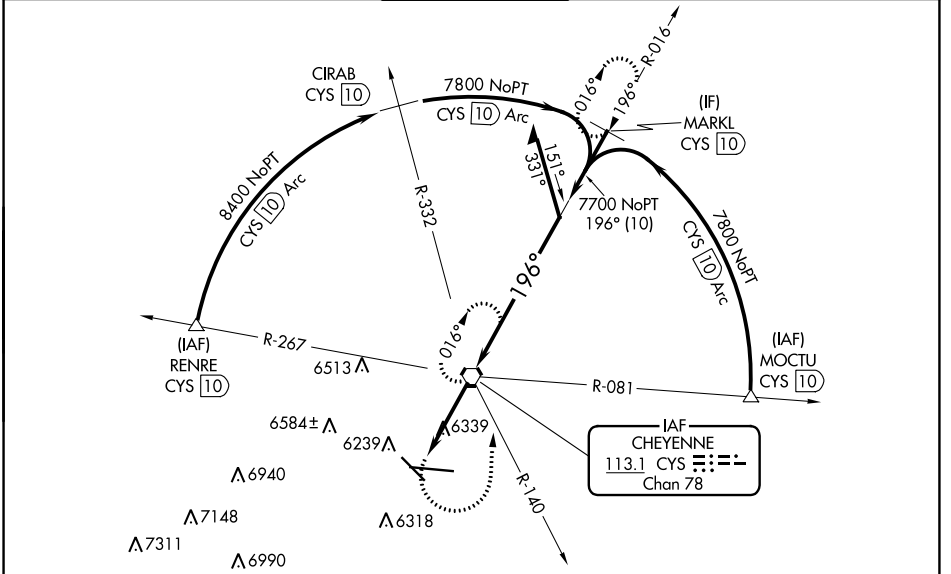
# VOR or TACAN-A

CHEYENNE RGNL/JERRY OLSON FLD (CYS)

**ASR/PAR**

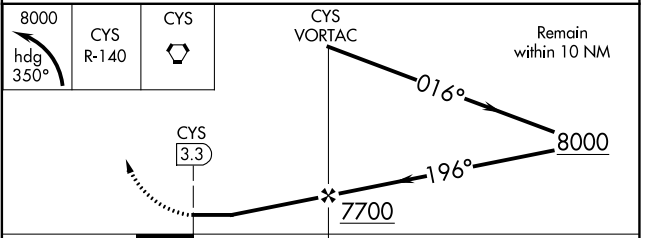
MISSED APPROACH: Climbing left turn to 8000 on heading 350° and on CYS VORTAC R-140 to CYS VORTAC and hold, continue climb-in-hold to 8000 (TACAN aircraft continue on CYS VORTAC R-016 to MARKL/10 DME and hold north, right turn, 196° inbound.)

ATIS <b>134.425 278.3</b>	CHEYENNE APP CON * <b>124.55 263.075</b>	CHEYENNE TOWER * <b>118.7 (CTAF) 0 257.8</b>	GND CON <b>121.9 254.275</b>	UNICOM <b>122.95</b>
------------------------------	---	---	---------------------------------	-------------------------



REIL Rwy 9, 13 and 31  
HIRL Rwy 9-27  
MIRL Rwy 13-31

FAF to MAP 3.3 NM					
Knots	60	90	120	150	180
Min:Sec	3:18	2:12	1:39	1:19	1:06



CATEGORY	A	B	C	D
<b>CIRCLING</b>	6640-1	480 (500-1)	6900-2 740 (800-2)	6940-2½ 780 (800-2½)

NW-1, 09 SEP 2021 to 07 OCT 2021

NW-1, 09 SEP 2021 to 07 OCT 2021