

COLUMBUS, MISSISSIPPI

ILS or LOC Y RWY 31C

LOC I-TBB 108.7	APCH CRS 315°	31C Rwy Ldg 12,004 TDZE 213 Arprt Elev 218	31R 8001 218 218
---------------------------	-------------------------	--	--

AL-91 [USAF]

COLUMBUS AFB (KCBM)

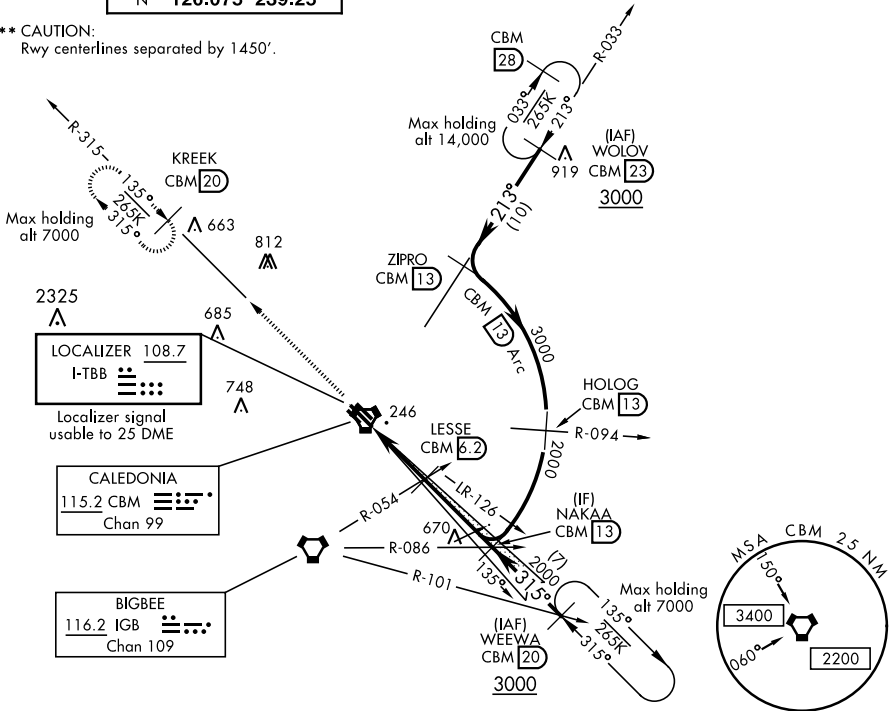
▼ * When ALS inop, increase RVR to 40, vis to ¾ mile.
 ** When ALS inop, increase RVR to 55, vis to 1 mile.

 ALSF-1

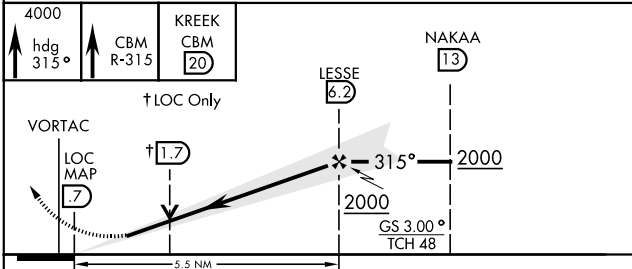
 MISSED APPROACH: Climb heading 315° to intercept the VOR/TAC CBM R-315 outbound to KREEK (CBM R-315/20) and hold. Maintain 4000.

ATIS 115.2 273.5	COLUMBUS APP CON SE 134.55 350.3 SW 135.6 323.275 N 126.075 239.25	COLUMBUS TOWER 126.65 379.925	GND CON 121.9 275.8	CLNC DEL 269.55
----------------------------	--	---	-------------------------------	---------------------------

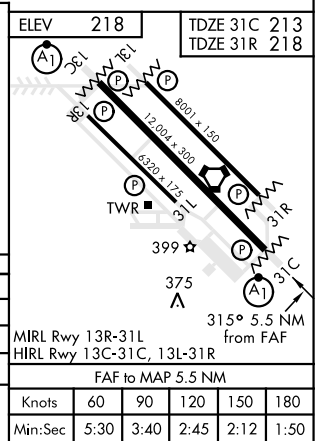
*** CAUTION:
Rwy centerlines separated by 1450'.



EMERG SAFE ALT 100 NM 3700



CATEGORY	A	B	C	D	E
S-ILS 31C *	413/24		200	(200-½)	
S-LOC 31C **	580/24	367	580/35		367 (400-¾)
SIDESTEP RWY 31R ***	580/55		362	(400-1)	
CIRCLING	740-1	522 (600-1)	760-1½ 542 (600-1½)	780-2 562 (600-2)	1220-3 1002 (1100-3)



COLUMBUS, MISSISSIPPI
Amdt 1 13AUG20

33°39'N-88°27'W

COLUMBUS AFB (KCBM)

ILS or LOC Y RWY 31C

SC-4, 09 SEP 2021 to 07 OCT 2021

SC-4, 09 SEP 2021 to 07 OCT 2021