

COLUMBUS, MISSISSIPPI

RNAV (GPS) RWY 13C

APCH CRS	Rwy Idg	12,004
135°	TDZE	196
	Arprt Elev	218

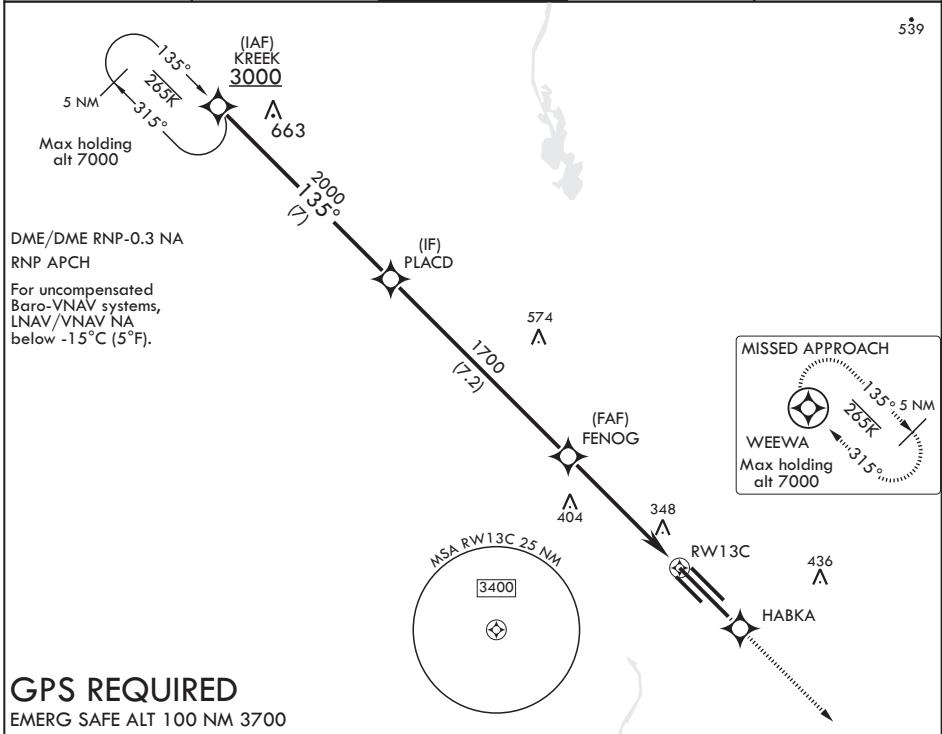
AL-91 (USAF)

COLUMBUS AFB (KCBM)

▼ * When ALS inop, increase vis to 1 3/8 miles.
 ** When ALS inop, increase CAT AB RVR to 55, vis to 1 mile, CAT CDE vis to 1 3/8 miles.

ALS-1	MISSED APPROACH: Climb to 4000 direct HABKA, direct track to WEEWA and hold as published.
-------	---

ATIS 115.2 273.5	APP CON 126.075 239.25 N 134.55 350.3 SE 135.6 323.275 SW	TOWER 126.65 379.925	GND CON 121.9 275.8	CLNC DEL 269.55
---------------------	--	-------------------------	------------------------	--------------------



GPS REQUIRED
EMERG SAFE ALT 100 NM 3700

KREEK 3000	PLACD 2000	FENOG 1700	HABKA 4000	tr 135°	WEEWA ELEV 218	TDZE 196
135°			135° to RW13C			
GP 3.04° TCH 49			↑LNAV only			
4.5 NM			↑1.4 NM to RW13C			
CATEGORY	A	B	C	D	E	
LNAV/VNAV DA*	680/50		484	(500-1)		
LNAV MDA**	680/24	484 (500-1/2)	680/50	484	(500-1)	
C CIRCLING	740-1	522 (600-1)	760-1 1/2 542 (600-1 1/2)	780-2 562 (600-2)	1240-3 1022 (1100-3)	

135°
 285K
 1.38
 6370 x 175
 12,004 - 300
 800' x 150
 51R
 51L
 TWR
 BCN 399
 MIREL Rwy 13R-31L
 HIRL Rws 13C-31C, 13L-31R

COLUMBUS, MISSISSIPPI

33°39'N - 88°27'W

COLUMBUS AFB (KCBM)

Amdt 1 27FEB20

RNAV (GPS) RWY 13C

SC-4, 09 SEP 2021 to 07 OCT 2021

SC-4, 09 SEP 2021 to 07 OCT 2021