

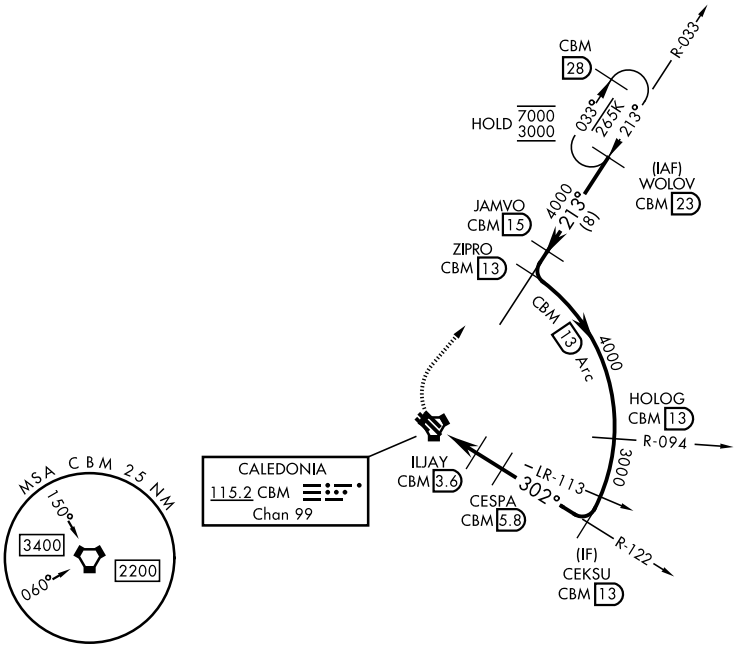
TACAN RWY 31R

VORTAC CBM 115.2 Chan 99	APCH CRS 302°	Rwy Idg TDZE 218 Arprt Elev 218	AL-91 [USAF]	COLUMBUS AFB (KCBM)
--	-------------------------	---	--------------	---------------------

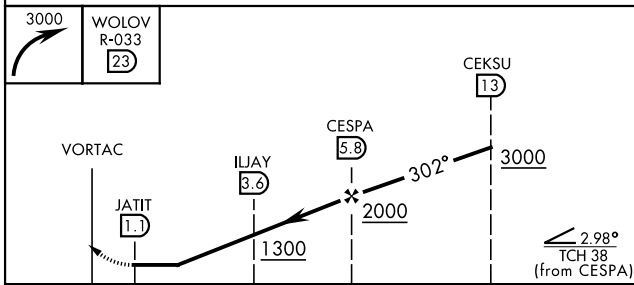
▼ Missed approach requires use of RNAV or ATC RADAR monitoring. MISSED APPROACH: Climbing right turn to WOLOV and hold as published. Maintain 3000.

ATIS 115.2 273.5	COLUMBUS APP CON 126.075 239.25 N 134.55 350.3 SE 135.6 323.275 SW	TOWER 126.65 379.925	GND CON 121.9 275.8	CLNC DEL 269.55
----------------------------	--	--------------------------------	-------------------------------	---------------------------

925



EMERG SAFE ALT 100 NM 3700



ELEV	218	TDZE	218
------	-----	------	-----

Runway 31R details:

- Runway length: 8001 x 130.
- Width: 12, 304 x 205.
- Other markings: 12, 31, 31A, 31B, 31C.
- Angle: 302° 5.5 NM from FAF.
- Other: TWR, MRL Rwy 13R-31L, HIRL Rwy 13C-31C, 13L-31R.

CATEGORY	A	B	C	D	E
S-31R	640/55	422 (500-1)	640-1¼	422 (500-1¼)	
CIRCLING	740-1	522 (600-1)	760-1½ 542 (600-1½)	840-2 622 (700-2)	1220-3 1002 (1100-3)

TACAN RWY 31R

SC-4, 09 SEP 2021 to 07 OCT 2021

SC-4, 09 SEP 2021 to 07 OCT 2021