

COLUMBUS, MISSISSIPPI

VOR/DME A

VORTAC CBM <b>115.2</b> Chan <b>99</b>	APCH CRS <b>090°</b>	Rwy Idg THRE Arprt Elev <b>N/A</b> <b>N/A</b> <b>218</b>
--	-------------------------	---

AL-91 [USAF]

COLUMBUS AFB (KCBM)

**▼** \* Circling authorized to Rwy 13R/Rwy 31L only. MISSED APPROACH: Climbing right turn to intercept the CBM R-224 outbound to JOLLI (CBM R-224/15) and hold. Maintain 3000.

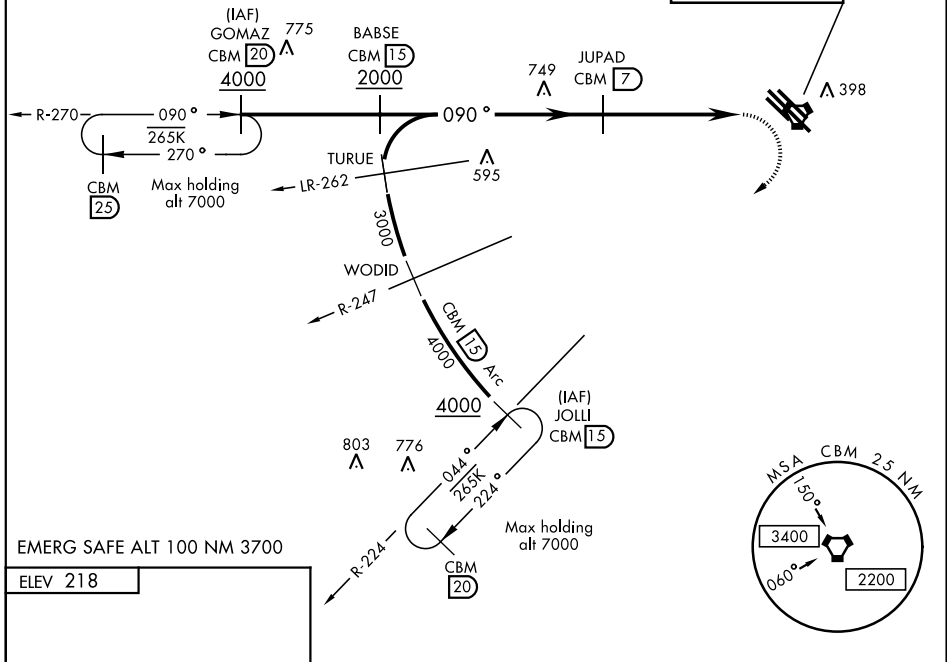
ATIS <b>115.2 273.5</b>	COLUMBUS APP CON <b>SE 134.55 350.3</b> <b>SW 135.6 323.275</b> <b>N 126.075 239.25</b>	COLUMBUS TOWER <b>126.65 379.925</b>	GND CON <b>121.9 275.8</b>	CLNC DEL <b>269.55</b>
----------------------------	--	---	-------------------------------	---------------------------

2310

△

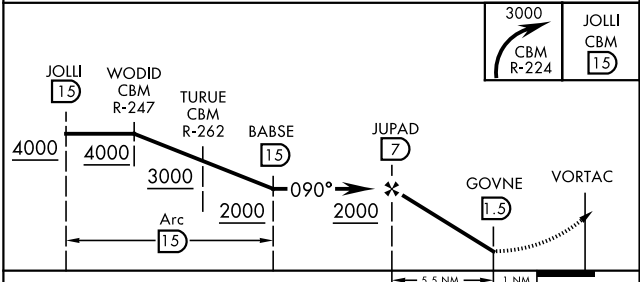
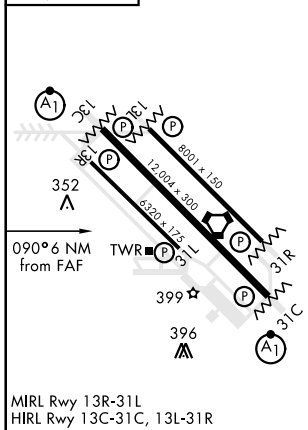
FOR USE BY 14 FTW  
ACFT ONLY

CALEDONIA  
115.2 CBM  
Chan 99



EMERG SAFE ALT 100 NM 3700

ELEV 218



CATEGORY	A	B	C
<b>C</b> CIRCLING *	780-1	562 (600-1)	780-1½ 562 (600-1½)

COLUMBUS, MISSISSIPPI  
Amdt 5 24JUL14

33°39'N-88°27'W

COLUMBUS AFB (KCBM)

VOR/DME A

SC-4, 09 SEP 2021 to 07 OCT 2021

SC-4, 09 SEP 2021 to 07 OCT 2021