

# DANEI THREE ARRIVAL

AL-107 (FAA)

DAYTON, OHIO

EC-2, 09 SEP 2021 to 07 OCT 2021

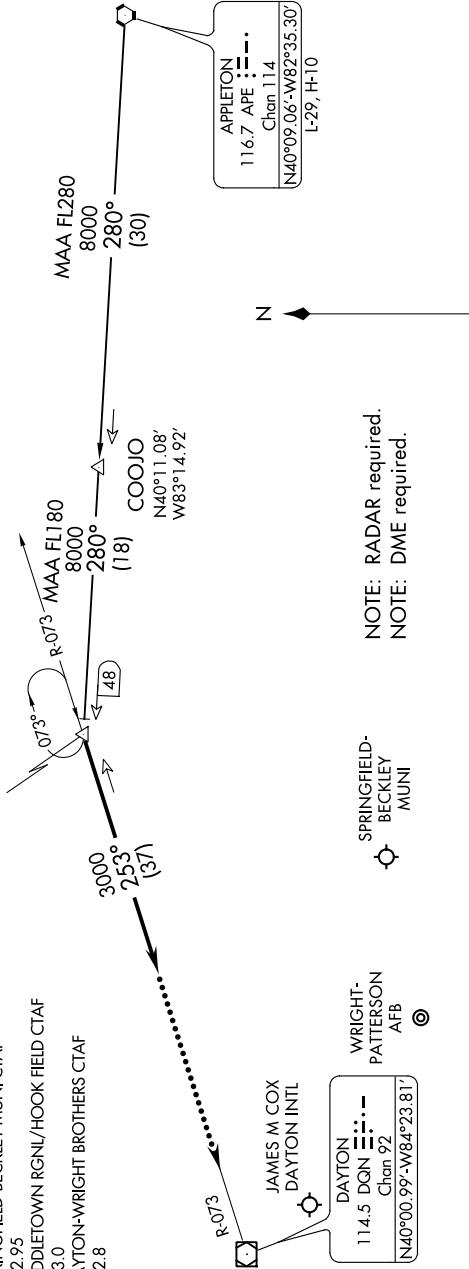
COLUMBUS APP CON  
118.425 323.15  
DAY ATIS  
125.8  
KFO ATIS  
124.475 269.9  
SPRINGFIELD-BECKLEY MUNI CTAF  
122.95  
MIDDLETOWN RGNL/HOOK FIELD CTAF  
123.0  
DAYTON-WRIGHT BROTHERS CTAF  
122.8

DANEI

N40°12.16'-W83°38.36'

### VERTICAL NAVIGATION PLANNING

Expect 11000 250K



APPLETON  
116.7 APE  
Chan 114  
N40°09.06'-W82°35.30'  
L-29, H-10

DAYTON  
114.5 DQN  
Chan 92  
N40°00.99'-W84°23.81'

NOTE: RADAR required.  
NOTE: DME required.

SPRINGFIELD-BECKLEY MUNI

WRIGHT-PATTERSON AFB

DAYTON-WRIGHT BROTHERS

MIDDLETOWN RGNL/HOOK FIELD

**APPLETON TRANSITION (APE.DANEI3):** From over APE VORTAC on APE R-280 to DANEI. Thence....

....From over DANEI on heading 253°. Expect RADAR vectors to final approach course.

### LOST COMMUNICATIONS:

In the event of lost communications: At DANEI, proceed direct DQN VOR/DME maintain 3000' until DQN VOR/DME.

NOTE: Chart not to scale.

EC-2, 09 SEP 2021 to 07 OCT 2021

# DANEI THREE ARRIVAL

DAYTON, OHIO