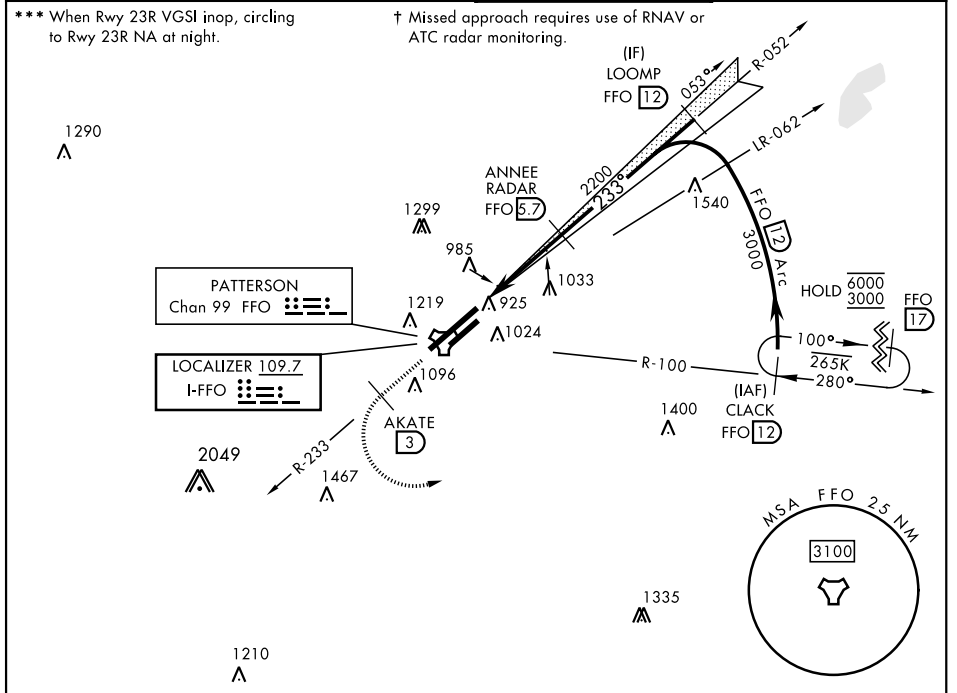


ILS or LOC RWY 23R

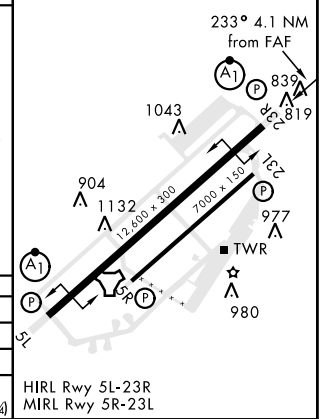
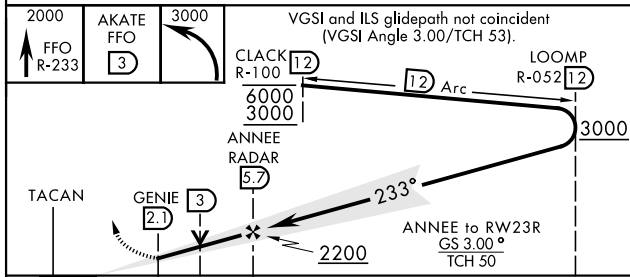
LOC I-FFO 109.7	APCH CRS 233°	Rwy Idg 12,600 THRE 823 Arprt Elev 823	AL-108 [USAF]	WRIGHT-PATTERSON AFB (KFFO)
---------------------------	-------------------------	---	---------------	-----------------------------

DME or RADAR required for Localizer. ▼ *When ALS inop, increase RVR to 40 and vis to ¼ mile. **When ALS inop, increase CAT AB RVR to 55 and vis to 1 mile, CAT CDE vis to 1⅓ miles.	ALSF-1 	† MISSED APPROACH: Climb via FFO R-233 to 2000, at 3 DME turn left direct CLACK to 3000 and hold.
---	------------	---

ATIS 124.475 269.9	COLUMBUS APP CON 118.85 269.275	PATTERSON TOWER 126.9 281.45	GND CON 121.8 335.8
------------------------------	---	--	-------------------------------



EMERG SAFE ALT 100 NM 3700	ELEV 823	THRE 823
----------------------------	----------	----------



CATEGORY	A	B	C	D	E	HIRL Rwy 5L-23R MIRL Rwy 5R-23L
S-ILS 23R*	1023/24		200	(200-½)		
S-LOC 23R**	1320/24	497	1320/50		497 (500-1)	
CIRCLING***	1380-1 557 (600-1)	1440-1 617 (600-1)	1560-2 737 (800-2)	1620-2½ 797 (800-2½)	1620-2¾ 797 (800-2¾)	

ILS or LOC RWY 23R

EC-2, 09 SEP 2021 to 07 OCT 2021

EC-2, 09 SEP 2021 to 07 OCT 2021