

# ILS or LOC RWY 5L

LOC I-FAE <b>109.7</b>	APCH CRS <b>053°</b>	Rwy ldg <b>12,600</b> TDZE <b>803</b> Arprt Elev <b>823</b>
---------------------------	-------------------------	---

AL-108 [USAF]

WRIGHT-PATTERSON AFB (KFFO)

▼ \* When ALS inop, increase RVR to 40 and vis to ½ mile.  
\*\* When ALS inop, increase CAT AB RVR to 55 and vis to 1 mile, CAT CDE vis to 1 ½ miles.



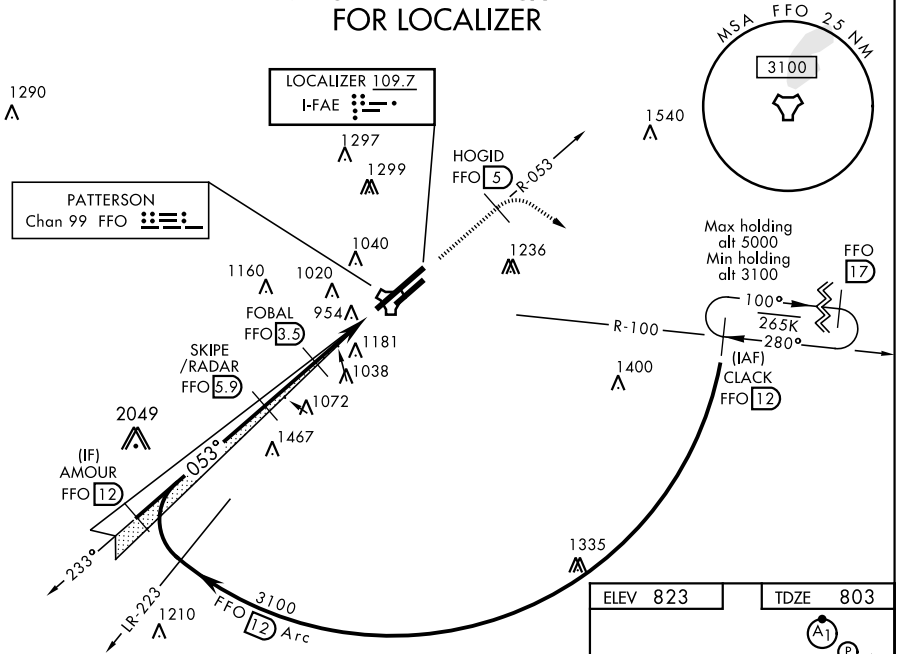
† MISSED APPROACH: Climb to 2000 via FFO R-053 at 5 DME, turn right direct CLACK climbing to 3100 and hold.

ATIS <b>124.475 269.9</b>	COLUMBUS APP CON <b>118.85 269.275</b>	PATTERSON TOWER <b>126.9 281.45</b>	GND CON <b>121.8 335.8</b>
------------------------------	---	--	-------------------------------

\*\*\* When Rwy 23R VGSi inop, circling to Rwy 23R NA at night.

† Missed approach requires use of RNAV or ATC radar monitoring.

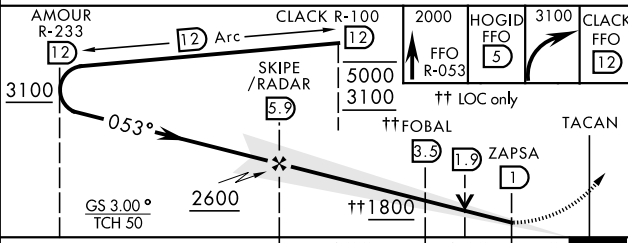
## DME or RADAR REQUIRED FOR LOCALIZER



EC-2, 09 SEP 2021 to 07 OCT 2021

EC-2, 09 SEP 2021 to 07 OCT 2021

### EMERG SAFE ALT 100 NM 3700



ELEV 823	TDZE 803
----------	----------

053° 5.4 NM from FAF

HIRL Rwy 5L-23R	1038
MIRL Rwy 5R-23L	Δ
FAF to MAP 4.9 NM	

Knots	60	90	120	150	180
Min:Sec	4:54	3:16	2:27	1:58	1:38

# ILS or LOC RWY 5L