


# RNAV (GPS) RWY 5L

APCH CRS	Rwy Idg	12,600
053°	TDZE	803
	Arpt Elev	823

AL-108 (USAF)

WRIGHT PATTERSON AFB (KFFO)

**▼** \* When ALS inop increase CAT AB RVR to 55, vis to 1 mile; CAT CD vis to 1 5/8 miles.  
 \*\* When Rwy 23R VGSI inop, circling to Rwy 23R NA at night.

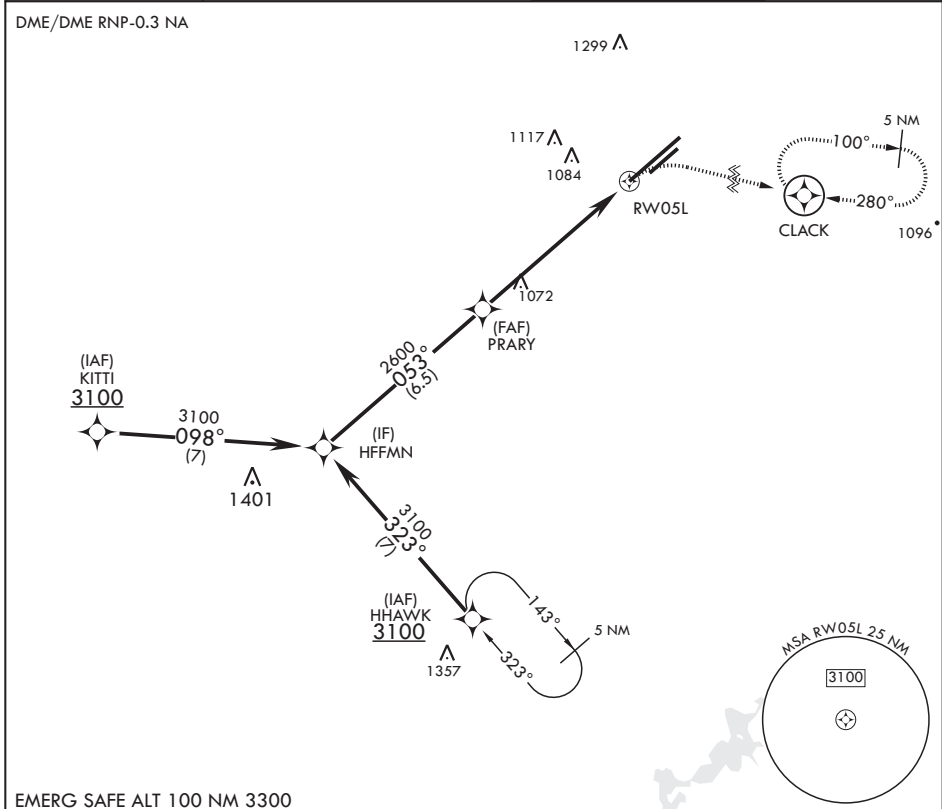
**ALSF-1**  
 MISSED APPROACH: Turn right climb to 3100 direct CLACK WPT and hold.

ATIS  
**124.475 269.9**

COLUMBUS APP CON/DEP CON  
**118.85 269.275**

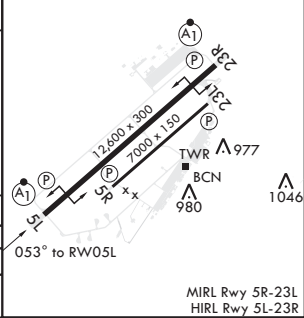
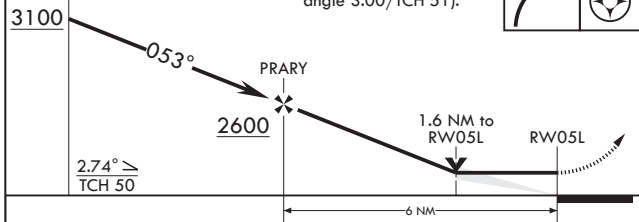
PATTERSON TOWER  
**126.9 281.45**

GND CON  
**121.8 335.8**



EMERG SAFE ALT 100 NM 3300

3100 CLACK ELEV 823 TDZE 803



CATEGORY	A	B	C	D
LNAV MDA*	1380/24	577 (600-1/2)	1380-1/4	577 (600-1/4)
CIRCLING**	1380-1 557 (600-1)	1440-1 617 (700-1)	1560-2 737 (800-2)	1620-2 1/2 797 (800-2 1/2)

MIRL Rwy 5R-23L  
 HIRL Rwy 5L-23R

# RNAV (GPS) RWY 5L

EC-2, 09 SEP 2021 to 07 OCT 2021

EC-2, 09 SEP 2021 to 07 OCT 2021