

DAYTON, OHIO

# RNAV (GPS) RWY 5R

19171

APCH CRS	Rwy Idg	<b>7000</b>
<b>053°</b>	TDZE	<b>813</b>
	Arprt Elev	<b>823</b>

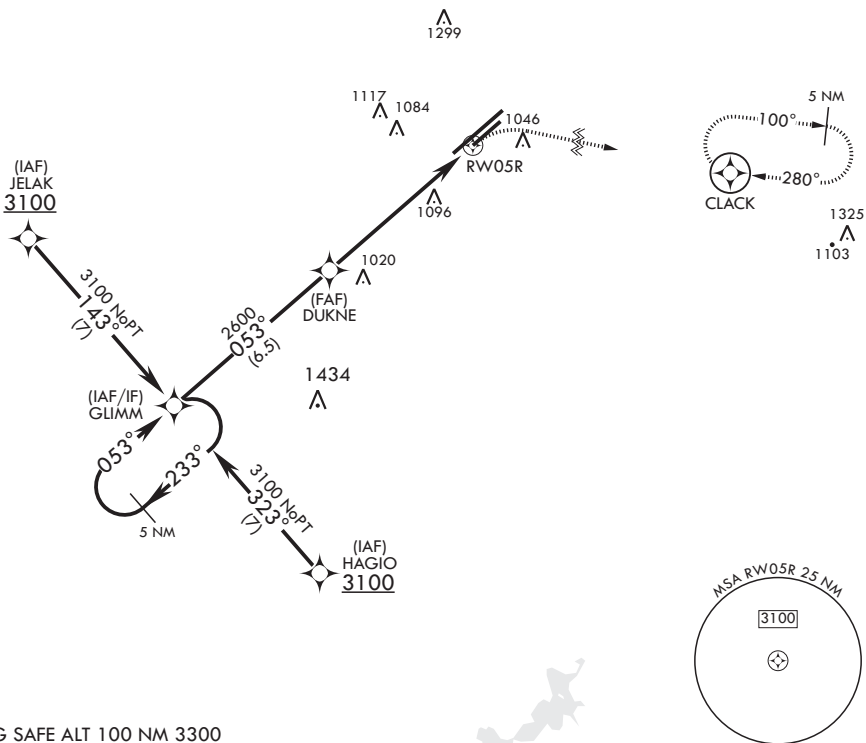
AL-108 (USAF)

WRIGHT PATTERSON AFB (KFFO)

**▼** \* When Rwy 23R VGSi inop, circling to Rwy 23R NA at night. MISSED APPROACH: Turn right climb to 3100 direct CLACK WPT and hold.

ATIS <b>124.475 269.9</b>	COLUMBUS APP CON/DEP CON <b>118.85 269.275</b>	PATTERSON TOWER <b>126.9 281.45</b>	GND CON <b>121.8 335.8</b>
------------------------------	---	--	-------------------------------

DME/DME RNP-0.3 NA



EMERG SAFE ALT 100 NM 3300

		<p>3100 CLACK ELEV 823 TDZE 813</p>		
<p>VGSI and descent angles not coincident. (VGSI Angle 3.00° TCH 51)</p>				
CATEGORY	A	B	C	D
LNAV MDA	1380-1	567 (600-1)	1380-1 <sup>5</sup> / <sub>8</sub>	567 (600-1 <sup>5</sup> / <sub>8</sub> )
CIRCLING*	1380-1 557 (600-1)	1440-1 617 (700-1)	1560-2 737 (800-2)	1620-2 <sup>1</sup> / <sub>2</sub> 797 (800-2 <sup>1</sup> / <sub>2</sub> )

DAYTON, OHIO  
Amdt 4 13OCT16

39°50'N - 84°03'W

WRIGHT PATTERSON AFB (KFFO)

# RNAV (GPS) RWY 5R

MIRL Rwy 5R-23L  
HIRL Rwy 5L-23R

EC-2, 09 SEP 2021 to 07 OCT 2021

EC-2, 09 SEP 2021 to 07 OCT 2021