

(CEZ2.CEZ) 18312

CORTEZ TWO DEPARTURE

AL-112 (FAA)

CORTEZ MUNI (CEZ)
CORTEZ, COLORADO

DENVER CENTER
118.575 348.7

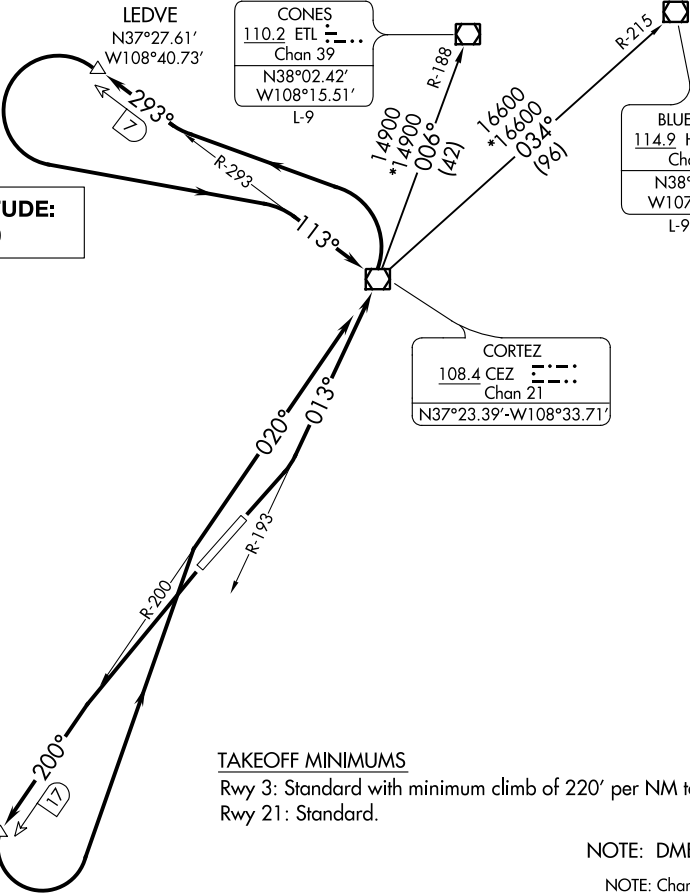
LEDVE
N37°27.61'
W108°40.73'

CONES
110.2 ETL
Chan 39
N38°02.42'
W108°15.51'
L-9

BLUE MESA
114.9 HBU
Chan 96
N38°27.13'
W107°02.38'
L-9, H-3

CORTEZ
108.4 CEZ
Chan 21
N37°23.39'-W108°33.71'

**TOP ALTITUDE:
10200**



TAKEOFF MINIMUMS

Rwy 3: Standard with minimum climb of 220' per NM to 10200.
Rwy 21: Standard.

NOTE: DME required.

NOTE: Chart not to scale.



DEPARTURE ROUTE DESCRIPTION

TAKEOFF RUNWAY 3: Climbing left turn to 7100 on CEZ R-193 to CEZ VOR/DME. Continue climbing left turn to 8600 on CEZ R-293 to LEDVE/CEZ 7 DME, then climbing left turn to 10200 on CEZ R-293 to CEZ VOR/DME. Cross CEZ VOR/DME at or above 10200 for route of flight. Thence. . . .

TAKEOFF RUNWAY 21: Climbing left turn to 7900 on CEZ R-200 to ODROE/CEZ 17 DME, then climbing left turn to 10200 on CEZ R-200 to CEZ VOR/DME. Cross CEZ VOR/DME at or above 10200 for route of flight. Thence. . . .

. . . .via (transition) or (assigned route).

BLUE MESA TRANSITION (CEZ2.HBU): From over CEZ VOR/DME on CEZ R-034 and HBU R-215 to HBU VOR/DME.

CONES TRANSITION (CEZ2.ETL): From over CEZ VOR/DME on CEZ R-006 and ETL R-188 to ETL VOR/DME.

CORTEZ TWO DEPARTURE

(CEZ2.CEZ) 21JUL16

CORTEZ, COLORADO
CORTEZ MUNI (CEZ)

SW-1, 09 SEP 2021 to 07 OCT 2021

SW-1, 09 SEP 2021 to 07 OCT 2021