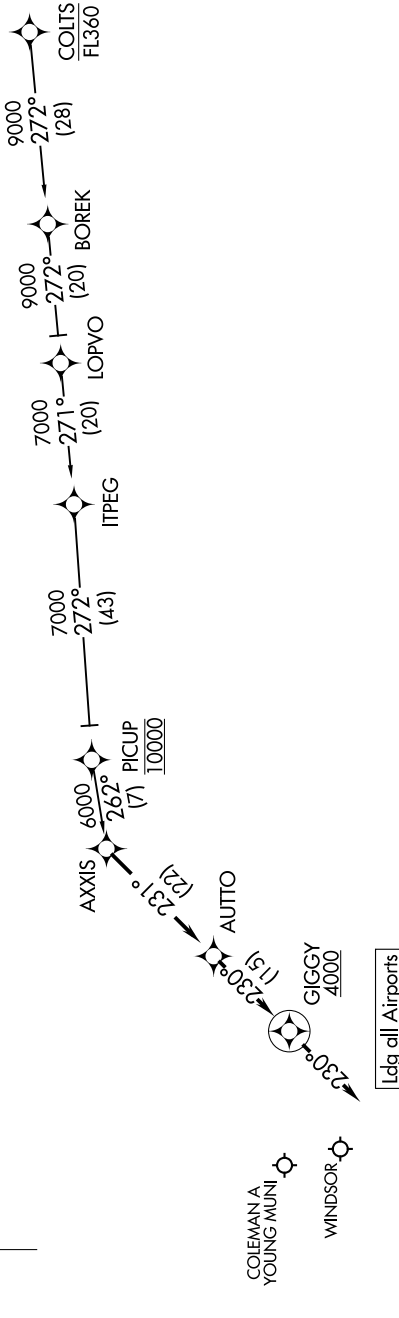


GIGGY TWO ARRIVAL (RNAV)

DETROIT, MICHIGAN

EC-1, 09 SEP 2021 to 07 OCT 2021

DET ATIS
124.875
DETROIT APP CON
134.3 284.0



NOTE: RADAR required.
NOTE: RNAV 1.
NOTE: DME/DME/IRU or GPS required.

ARRIVAL ROUTE DESCRIPTION

COLTS TRANSITION (COLTS.GIGGY2)
PICUP TRANSITION (PICUP.GIGGY2)

LANDING ALL AIRPORTS: From AXXIS on track 231° to AUTO, then on track 230° to cross GIGGY at or above 4000, then on track 230°. Expect RADAR vectors to final approach course.

NOTE: Chart not to scale.

GIGGY TWO ARRIVAL (RNAV)

(AXXIS.GIGGY2) 10OCT19

DETROIT, MICHIGAN

EC-1, 09 SEP 2021 to 07 OCT 2021