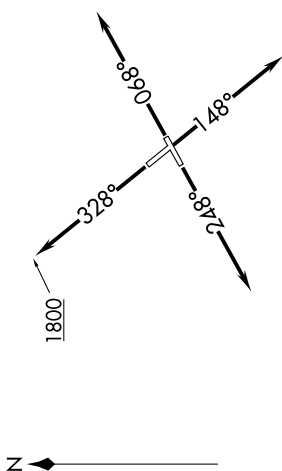


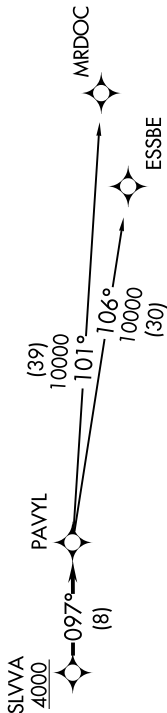
EC-1, 09 SEP 2021 to 07 OCT 2021

**TOP ALTITUDE:
ASSIGNED BY ATC**



NOTE: RNAV 1.
 NOTE: RADAR required.
 NOTE: DME/DME/IRU or GPS required.
 NOTE: Turbojet departures at/above 10000, maintain 280K until advised by ATC.

ATIS
 124.875
 GND CON
 121.85
 DETROIT CITY TOWER
 121.3 257.8
 DETROIT DEP CON
 134.3 284.0



TAKEOFF MINIMUMS:
 Rwys 7, 15, 33: Standard.
 Rwy 25: Standard with minimum climb of 210' per NM to 1000.

NOTE: Chart not to scale.

DEPARTURE ROUTE DESCRIPTION

TAKEOFF RUNWAY 7: Climb on heading 068° or as assigned for RADAR vectors to cross SLVVA at or above 4000, thence....
TAKEOFF RUNWAY 15: Climb on heading 148° or as assigned for RADAR vectors to cross SLVVA at or above 4000, thence....
TAKEOFF RUNWAY 25: Climb on heading 248° or as assigned for RADAR vectors to cross SLVVA at or above 4000, thence....
TAKEOFF RUNWAY 33: Climb on heading 328° to 1800 then as assigned for RADAR vectors to cross SLVVA at or above 4000, thence....

....on track 097° to PAVYL, then on (transition). Maintain ATC assigned altitude, expect filed altitude 10 minutes after departure.

ESSBE TRANSITION (PAVYL2.ESSBE):
 MRDOC TRANSITION (PAVYL2.MRDOC):

EC-1, 09 SEP 2021 to 07 OCT 2021