

EC-1, 09 SEP 2021 to 07 OCT 2021

DEPARTURE ROUTE DESCRIPTION

- TAKEOFF RUNWAY 7:** Climb on heading 068° or as assigned for RADAR vectors to cross JWELS at or above 4000, thence....
- TAKEOFF RUNWAY 15:** Climb on heading 148° or as assigned for RADAR vectors to cross JWELS at or above 4000, thence....
- TAKEOFF RUNWAY 25:** Climb on heading 248° or as assigned for RADAR vectors to cross JWELS at or above 4000, thence....
- TAKEOFF RUNWAY 33:** Climb on heading 328° to 1800 then as assigned for RADAR vectors to cross JWELS at or above 4000, thence....

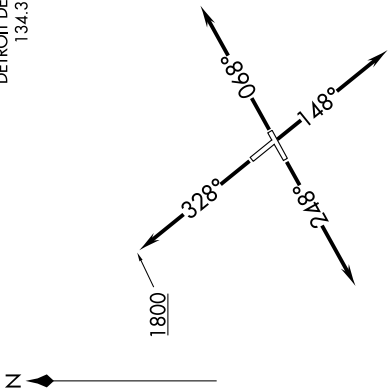
...on track 218° to SNDRS, then on (transition). Maintain ATC assigned altitude, expect filed altitude 10 minutes after departure.

BGHT TRANSITION (SNDRS2.BGHRT):
TORRR TRANSITION (SNDRS2.TORRR):

- NOTE: RNAV 1.
- NOTE: RADAR required.
- NOTE: DME/DME/IRU or GPS required.
- NOTE: Turbopjet departures at/above 10000, maintain 280K until advised by ATC.
- NOTE: TORRR TRANSITION: For use by KIND and KCVG area arrivals only and flights filed at or below FL220, or as assigned by ATC.

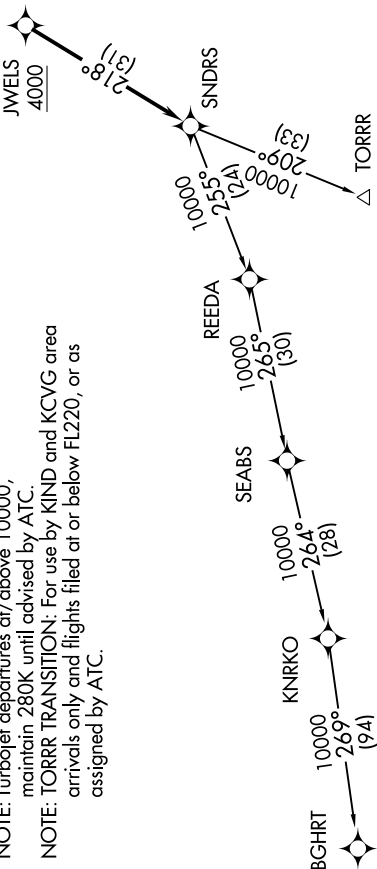
TOP ALTITUDE:
ASSIGNED BY ATC

ATIS 124.875
 GND CON 121.85
 DETROIT CITY TOWER 121.3 257.8
 DETROIT DEP CON 134.3 284.0



TAKEOFF MINIMUMS:
 Rwy 7, 15, 33: Standard.
 Rwy 25: Standard with minimum climb of 210' per NM to 1000.

NOTE: Chart not to scale.



EC-1, 09 SEP 2021 to 07 OCT 2021