

(ZETTR3.ZETTR) 19339

ZETTR THREE DEPARTURE (RNAV)

AL-118 (FAA)

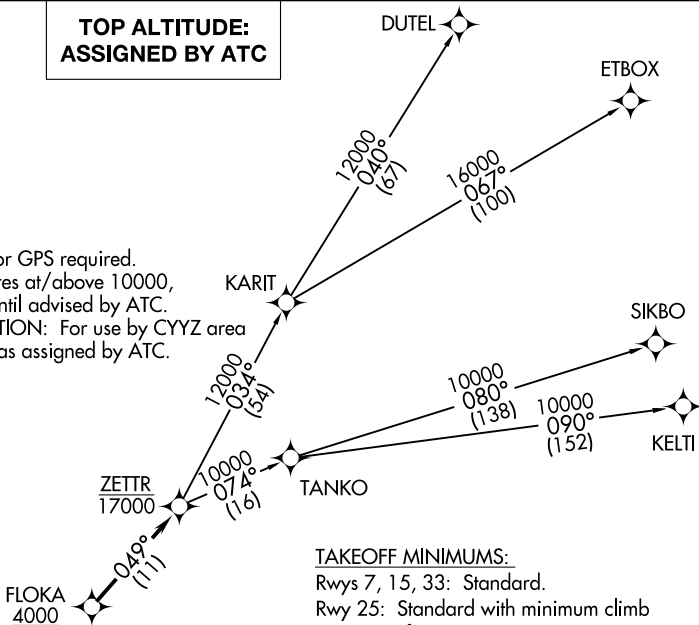
COLEMAN A YOUNG MUNI (DET)

DETROIT, MICHIGAN

ATIS
124.875
GND CON
121.85
DETROIT CITY TOWER
121.3 257.8
DETROIT DEP CON
134.3 284.0

**TOP ALTITUDE:
ASSIGNED BY ATC**

NOTE: RNAV 1.
NOTE: RADAR required.
NOTE: DME/DME/IRU or GPS required.
NOTE: Turbojet departures at/above 10000, maintain 280K until advised by ATC.
NOTE: TANKO TRANSITION: For use by CYYZ area arrivals only, or as assigned by ATC.



TAKEOFF MINIMUMS:

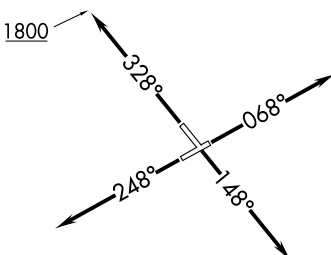
Rwys 7, 15, 33: Standard.
Rwy 25: Standard with minimum climb of 210' per NM to 1000.

DEPARTURE ROUTE DESCRIPTION

TAKEOFF RUNWAY 7: Climb on heading 068° or as assigned for RADAR vectors to cross FLOKA at or above 4000, thence....
TAKEOFF RUNWAY 15: Climb on heading 148° or as assigned for RADAR vectors to cross FLOKA at or above 4000, thence....
TAKEOFF RUNWAY 25: Climb on heading 248° or as assigned for RADAR vectors to cross FLOKA at or above 4000, thence....
TAKEOFF RUNWAY 33: Climb on heading 328° to 1800 then as assigned for RADAR vectors to cross FLOKA at or above 4000, thence....

....on track 049° to cross ZETTR at or below 17000, then on (transition). Maintain ATC assigned altitude, expect filed altitude 10 minutes after departure.

DUTEL TRANSITION (ZETTR3.DUTEL):
ETBOX TRANSITION (ZETTR3.ETBOX):
KELTI TRANSITION (ZETTR3.KELTI):
SIKBO TRANSITION (ZETTR3.SIKBO):
TANKO TRANSITION (ZETTR3.TANKO):



NOTE: Chart not to scale.

ZETTR THREE DEPARTURE (RNAV)
(ZETTR3.ZETTR) 05DEC19

DETROIT, MICHIGAN
COLEMAN A YOUNG MUNI (DET)

EC-1, 09 SEP 2021 to 07 OCT 2021

EC-1, 09 SEP 2021 to 07 OCT 2021