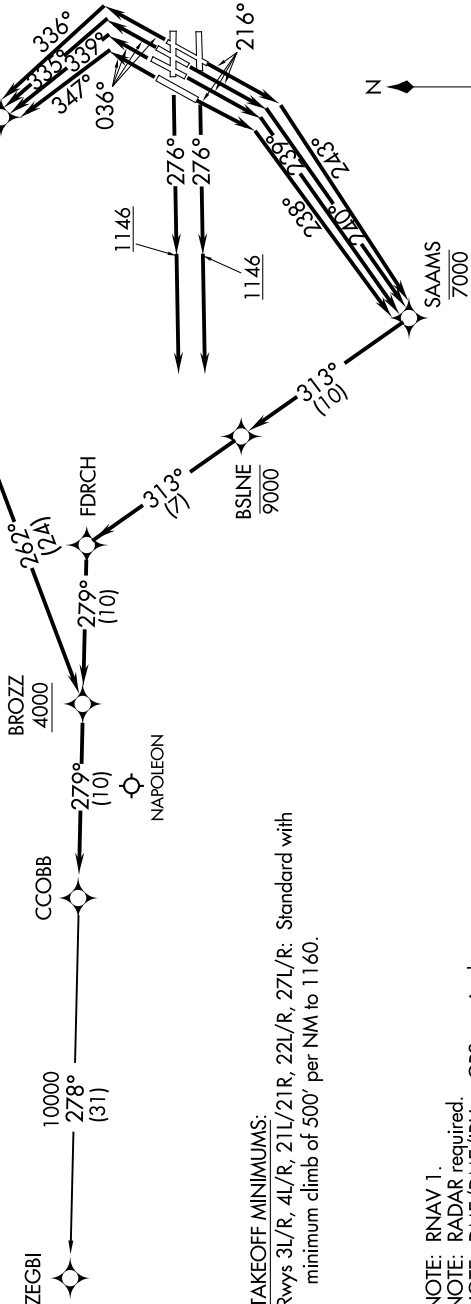


# CCOBB TWO DEPARTURE (RNAV)

EC-1, 09 SEP 2021 to 07 OCT 2021

**TOP ALTITUDE:  
17000**

D-ATIS 118.125  
 CLNC DEL 120.65  
 CPDLC  
 GND CON  
 121.8 (NW) 119.45 (NE)  
 132.725 (SW) 119.25 (SE)  
 METRO TOWER  
 118.4, 317.725 (Rwys 3L/R, 21L/R, 27R)  
 128.75, 317.725 (Rwy 27L)  
 135.0, 317.725 (Rwy 4L/R, 22L/R)  
 DETROIT DEP CON  
 125.525, 284.0 (Rwy 3L/R, 4L/R, 21L/R, 22L/R)  
 132.025, 284.0 (Rwy 27L/R)



**NOTE:** RNAV 1.  
**NOTE:** RADAR required.  
**NOTE:** DME/DME/IRU or GPS required.  
**NOTE:** Turbojet departures at/above 10000, maintain 280K until advised by ATC.  
**NOTE:** For use by aircraft filed at or below FL220, or as assigned by ATC.  
**NOTE:** CAUTION: Parachute jumping 6 NM SW of BROZZ, 3 NM radius of Napoleon Airport (3NP) at or below 17999 (SR-SS).  
**NOTE:** If unable to accept 500' per NM climb rate, advise clearance delivery on initial contact.

(NARRATIVE ON FOLLOWING PAGE)

**NOTE:** Chart not to scale.

# CCOBB TWO DEPARTURE (RNAV)