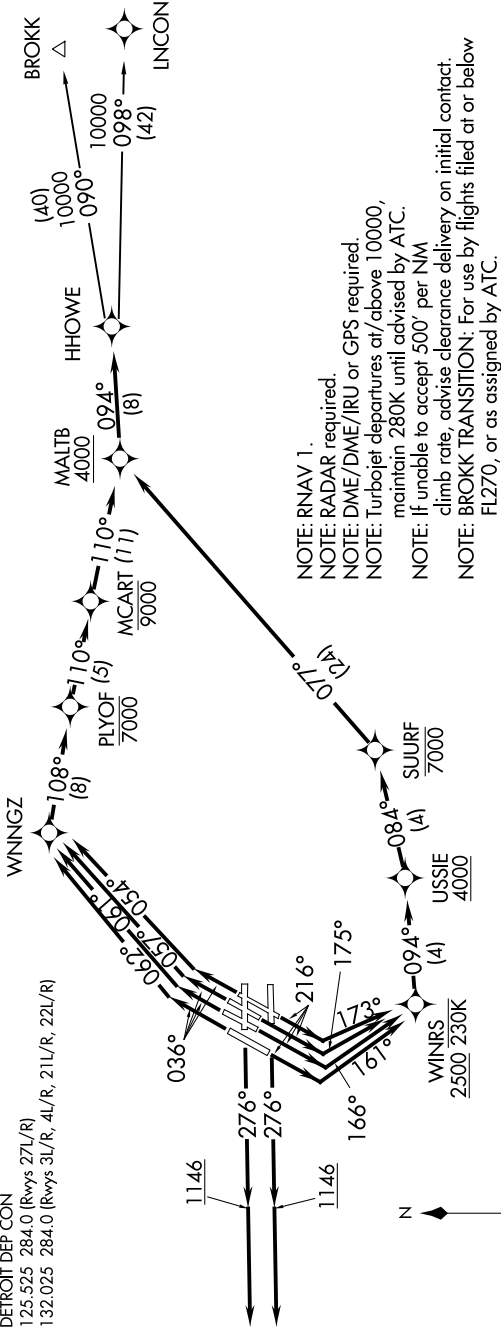


EC-1, 09 SEP 2021 to 07 OCT 2021

D-ATIS 118.125
CLNC DEL 120.65
CPDLC
GND CON
121.8 (NW) 119.45 (NE)
132.725 (SW) 119.25 (SE)
METRO TOWER
118.4, 317.725 (Rwys 3L/R, 21L/R, 27R)
128.75 317.725 (Rwy 27L)
135.0 317.725 (Rwy 4L/R, 22L/R)
DETROIT DEP CON
125.525 284.0 (Rwys 27L/R)
132.025 284.0 (Rwys 3L/R, 4L/R, 21L/R, 22L/R)

TOP ALTITUDE:
17000



NOTE: RNAV 1.
NOTE: RADAR required.
NOTE: DME/DME/IRU or GPS required.
NOTE: Turbojet departures at/above 10000, maintain 280K until advised by ATC.
NOTE: If unable to accept 500' per NM climb rate, advise clearance delivery on initial contact.
NOTE: BROKK TRANSITION: For use by flights filed at or below FL270, or as assigned by ATC.

TAKEOFF MINIMUMS:
Rwys 3L/R, 4L/R, 21L/R, 22L/R, 27L/R: Standard with minimum climb of 500' per NM to 1146.

(NARRATIVE ON FOLLOWING PAGE)

EC-1, 09 SEP 2021 to 07 OCT 2021

NOTE: Chart not to scale.