

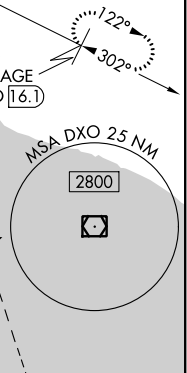
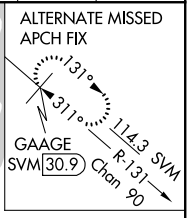
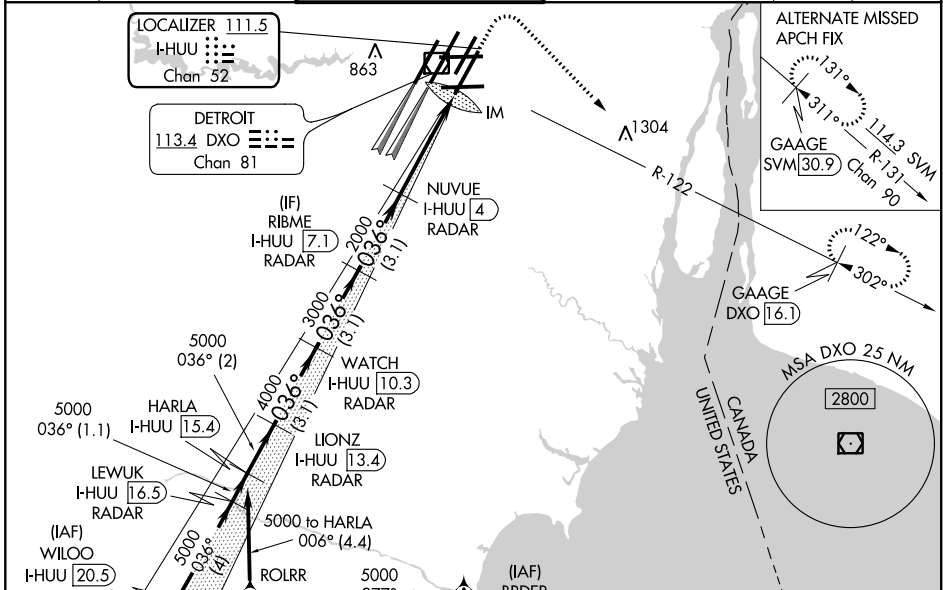
LOC/DME I-HUU 111.5 Chan 52	APP CRS 036°	Rwy Idg 10001 TDZE 633 Apt Elev 645
---	------------------------	--

ILS RWY 3R (SA CAT I)

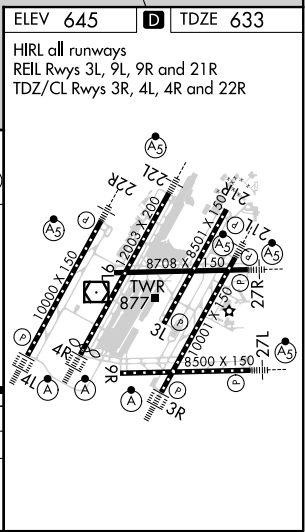
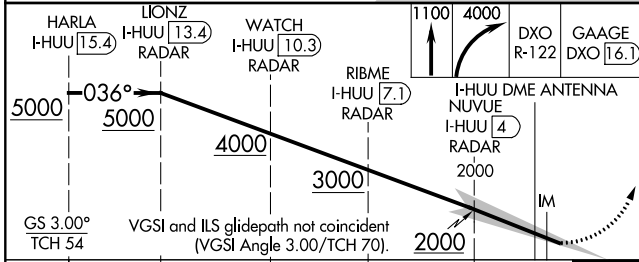
DETROIT METRO WAYNE COUNTY (DTW)

RNAV 1-GPS.		ALSF-2 	MISSED APPROACH: Climb to 1100 then climbing right turn to 4000 on DXO VOR/DME R-122 to GAAGE/DXO 16.1 DME and hold.
MERCA and BRDR: RNAV 1-DME/DME/IRU or GPS required. Aircraft not DME/DME/IRU or GPS equipped - RADAR required for procedure entry.			
⚠ Simultaneous approach authorized. DME required. Requires specific OPSPec, MSPEC, or LOA approval and use of HUD to DH.			

D-ATIS 133.675	DETROIT APP CON 125.15 284.0	METRO TOWER 118.4 317.725	GND CON 121.8 (NW) 119.45 (NE) 132.725 (SW) 119.25 (SE)	CLNC DEL 120.65	CPDLC
--------------------------	--	-------------------------------------	---	---------------------------	-------



ELEV 645	D TDZE 633
HIRL all runways	
REIL Rwy's 3L, 9L, 9R and 21R	
TDZ/CL Rwy's 3R, 4L, 4R and 22R	



2 NM		3.1 NM		3.1 NM		3.1 NM		4.1 NM		10307	
CATEGORY	A	B	C	D							
S-ILS 3R	RA 153/14 150 DA 783										
SA CATEGORY I ILS - SPECIAL AIRCREW & AIRCRAFT CERTIFICATION REQUIRED											

EC-1, 09 SEP 2021 to 07 OCT 2021

EC-1, 09 SEP 2021 to 07 OCT 2021