

ILS PRM RWY 22L (CLOSE PARALLEL)

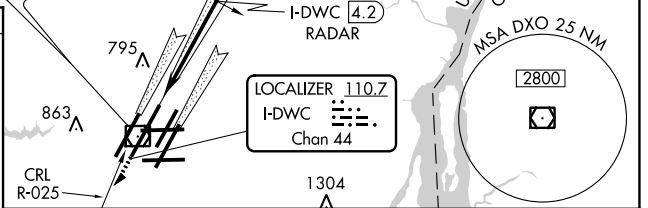
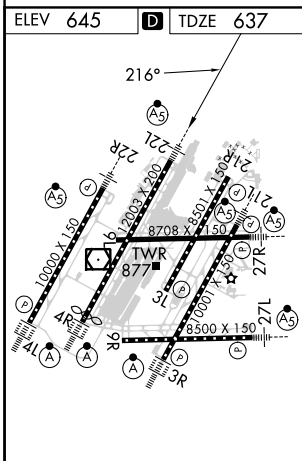
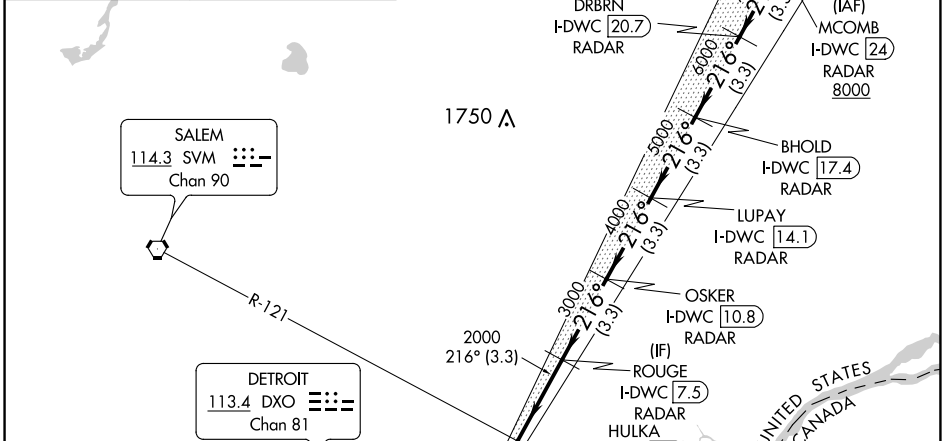
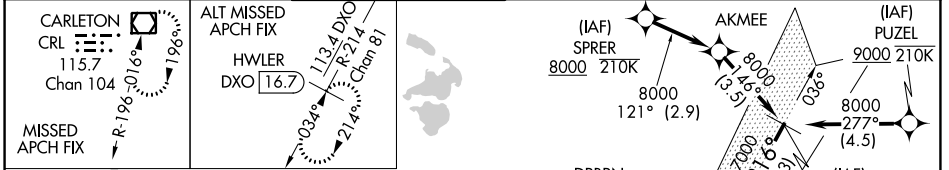
DETROIT METRO WAYNE COUNTY (DTW)

LOC/DME I-DWC 110.7 Chan 44	APP CRS 216°	Rwy Idg TDZE Apt Elev	12003 637 645
---	------------------------	-----------------------------	--

RNAV 1-GPS.
RNAV 1-DME/DME/IRU or RADAR required for procedure entry. DME or RADAR required.
Simultaneous approach authorized. Use of FD or AP required during simultaneous operations. Dual VHF comm required. See additional requirements on AAUP.
Procedure NA when glide slope not available.
*RVR 1800 authorized with use of FD or AP or HUD to DA.

MALSRL
MISSED APPROACH:
Climb to 4000 on heading 216° and CRL VOR/DME R-025 to CRL VOR/DME and hold, continue climb-in-hold to 4000.

D-ATIS 133.675	DETROIT APP CON 124.05 284.0	METRO TOWER 128.125 317.725 PRM 135.775	GND CON 121.8 (NW) 119.45 (NE) 119.25 (SE)	CLNC DEL 120.65	CPDLC
--------------------------	--	---	--	---------------------------	-------



4000	CRL R-025	CRL	ROUGE I-DWC 7.5 RADAR	LUPAY I-DWC 14.1 RADAR	BHOLD I-DWC 17.4 RADAR	DRBRN I-DWC 20.7 RADAR	MCOMB I-DWC 24 RADAR
3000		HULKA I-DWC 4.2 RADAR	OSKER I-DWC 10.8 RADAR				
2000							
1000							
0							
I-DWC DME ANTENNA		216°-8000					
4.3 NM		3.3 NM	3.3 NM	3.3 NM	3.3 NM	3.3 NM	3.3 NM
CATEGORY	A	B	C	D			
S-ILS 22L*	837/24 200 (200-1/2)						

TDZ/CL Rwy 3R, 4L, 4R and 22R
REIL Rwy 3L, 9L, 9R and 21R
HIRL all runways