

ILS PRM RWY 4R (CLOSE PARALLEL)

DETROIT METRO WAYNE COUNTY (DTW)

LOC/DME I-DTW 110.7	APP CRS 036°	Rwy Idg 11494
Chan 44		TDZE 640
		Apt Elev 645

RNAV 1-GPS.

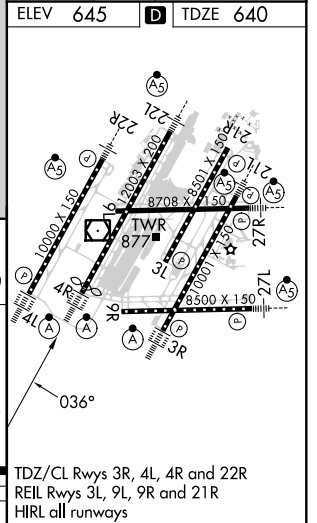
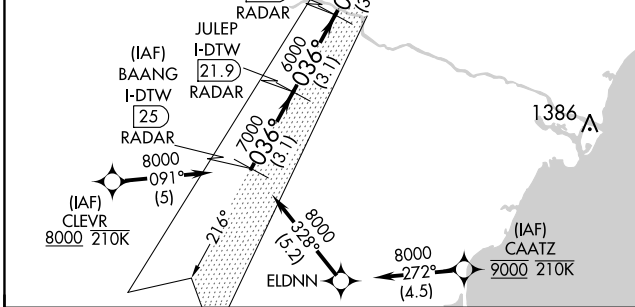
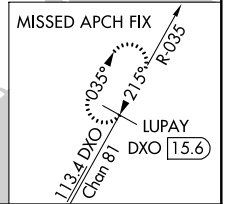
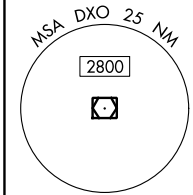
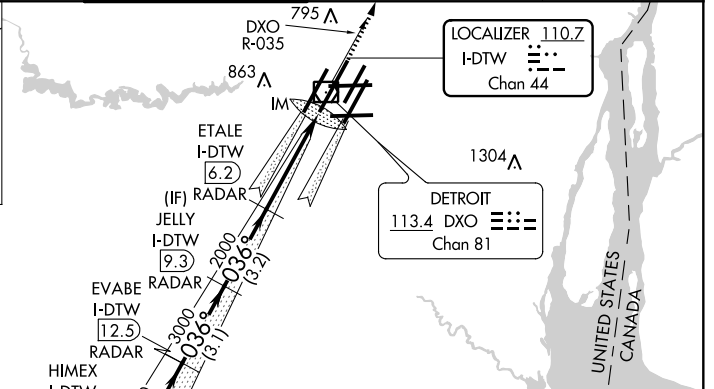
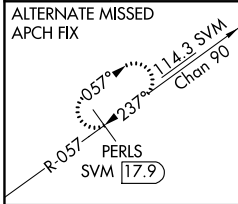
DME or RADAR required. CLEVR, CAATZ and ELDNN: RNAV 1-DME/DME/IRU or GPS required. Aircraft not DME/DME/IRU or GPS equipped- RADAR required for procedure entry.

ALSF-2

MISSED APPROACH:
Climb to 4000 on DXO
VOR/DME R-035 to
LUPAY/DXO VOR/DME
15.6 DME and hold.

Simultaneous approach authorized. Use of FD or AP required during simultaneous operations. Dual VHF Comm required. See additional requirements on AAUP. Procedure NA when glideslope not available.

D-ATIS 133.675	DETROIT APP CON 124.05 284.0	METRO TOWER 128.125 317.725 PRM 135.775	GND CON 121.8 (NW) 119.45 (NE) 132.725 (SW) 119.25 (SE)	CLNC DEL 120.65	CPDLC
--------------------------	--	---	---	---------------------------	-------



BAANG I-DTW 25 RADAR	JULEP I-DTW 21.9 RADAR	CULOP I-DTW 18.8 RADAR	HIMEX I-DTW 15.6 RADAR	EVABE I-DTW 12.5 RADAR	JELLY I-DTW 9.3 RADAR	ETALE I-DTW 6.2 RADAR	DXO R-035	LUPAY DXO 15.6
8000	7000	6000	5000	4000	3000	2000	4000	
GS 3.00° TCH 52								
CATEGORY	A		B		C		D	
S-ILS 4R	840/18		200 (200-1/2)					

ILS PRM RWY 4R (CLOSE PARALLEL)

EC-1, 09 SEP 2021 to 07 OCT 2021

EC-1, 09 SEP 2021 to 07 OCT 2021