

DETROIT, MICHIGAN

AL-119 (FAA)

ILS PRM Z RWY 22R (SA CAT I & II) (CLOSE PARALLEL)

21168

LOC/DME I-JKI 111.95	APP CRS 216°	Rwy Idg TDZE Apt Elev	10000 642 645
Chan 56 (Y)			

DETROIT METRO WAYNE COUNTY (DTW)

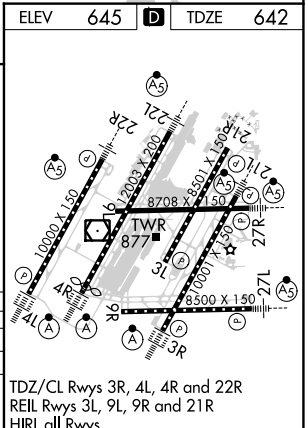
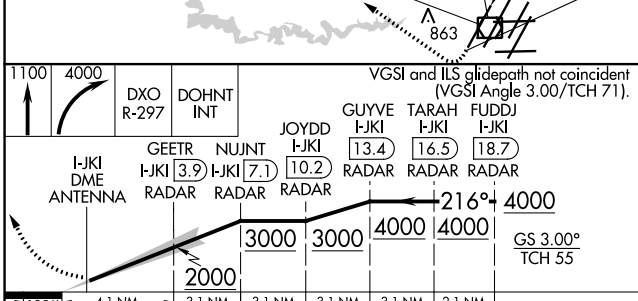
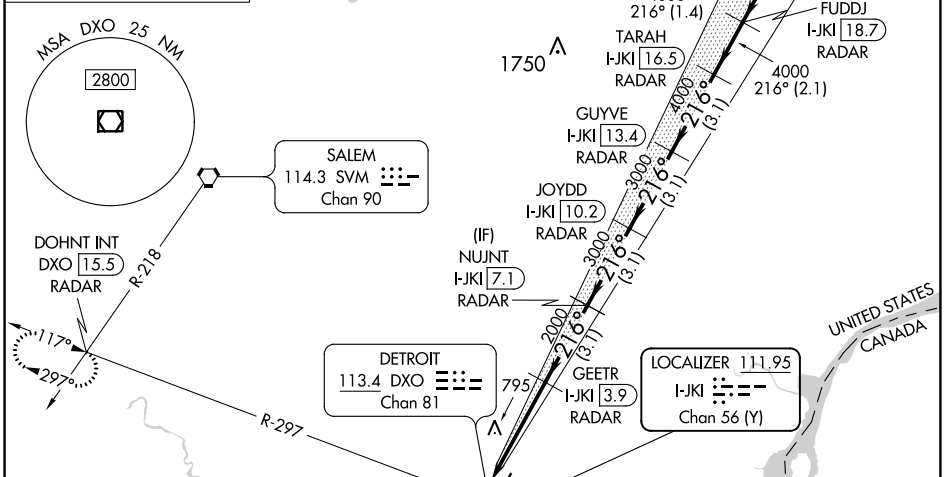
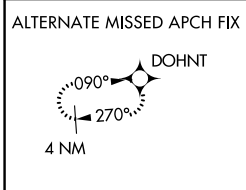
RNAV 1-GPS, HRRON and VALLI: RNAV 1-DME/DME/IRU or GPS required.
 Aircraft not DME/DME/IRU or GPS equipped - RADAR required for procedure entry.

Simultaneous approach authorized. Use of FD or AP required during simultaneous operations. Dual VHF Comm required. See additional requirements on AAUP.
 SA CAT I: Requires specific OPSPEC, MSPEC, or LOA approval and use of HUD to DH.
 SA CAT II: Reduced lighting: Requires specific OPSPEC, MSPEC, or LOA approval and use of autoland or HUD to touchdown.

MALSR

MISSED APPROACH: Climb to 1100 then climbing right turn to 4000 on DXO YOR/DME R-297 to DOHNT INT/ DXO 15.5 DME/RADAR and hold.

D-ATIS 133.675	DETROIT APP CON 124.05 284.0	METRO TOWER 135.0 317.25 PRM 127.05	GND CON 121.8 (NW) 119.45 (NE) 132.725 (SW) 119.25 (SE)	CLNC DEL 120.65	CPDLC
--------------------------	--	---	---	---------------------------	-------



1100	4000	DXO R-297	DOHNT INT	VGSi and ILS glidepath not coincident (VGSi Angle 3.00/TCH 71).				
IJKI DME ANTENNA	GEETR IJKI [3.9] RADAR	NUJNT IJKI [7.1] RADAR	JOYDD IJKI [10.2] RADAR	GUYVE IJKI [13.4] RADAR	TARAH IJKI [16.5] RADAR	FUDDJ IJKI [18.7] RADAR	216° 4000	GS 3.00° TCH 55
4.1 NM	3.1 NM	3.1 NM	3.1 NM	3.1 NM	2.1 NM			
CATEGORY	A	B	C	D				
S-ILS 22R		SA CAT I	RA 148/14	150 DA 792				
S-ILS 22R		SA CAT II	RA 98/12	100 DA 742				

SA CATEGORY I & II ILS - SPECIAL AIRCREW & AIRCRAFT CERTIFICATION REQUIRED

DETROIT, MICHIGAN
Orig-B 30JAN20

42°13'N-83°21'W

DETROIT METRO WAYNE COUNTY (DTW)

ILS PRM Z RWY 22R (SA CAT I & II) (CLOSE PARALLEL)

EC-1, 09 SEP 2021 to 07 OCT 2021

EC-1, 09 SEP 2021 to 07 OCT 2021