

LOC/DME I-BZB <b>111.75</b> Chan <b>54 (Y)</b>	APP CRS <b>213°</b>	Rwy Idg TDZE Apt Elev	<b>10000</b> <b>642</b> <b>645</b>
--	------------------------	-----------------------------	--

# ILS Y RWY 22R

DETROIT METRO WAYNE COUNTY (DTW)

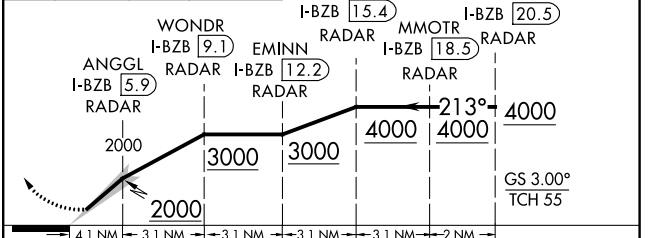
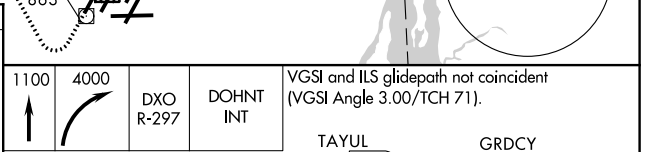
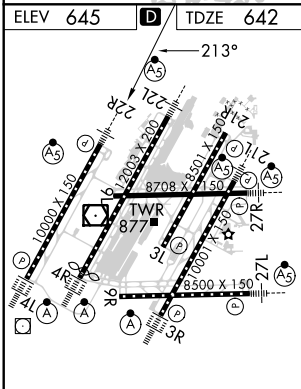
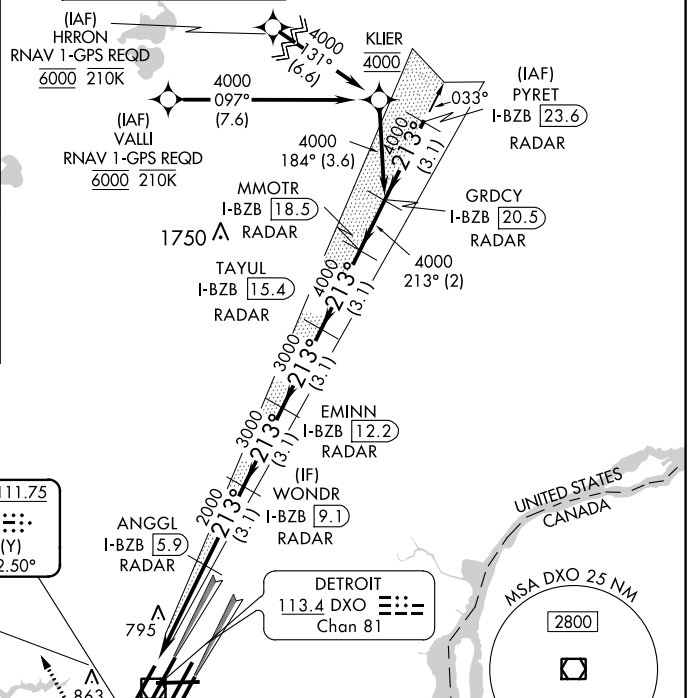
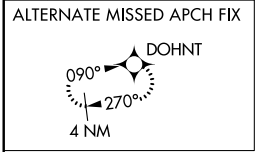
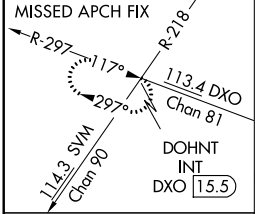
RNAV 1-GPS, HRRON and VALLI: RNAV 1-DME/DME/IRU or GPS required. Aircraft not DME/DME/IRU or GPS equipped - RADAR required for procedure entry.

▼ Simultaneous approach authorized.

MALSRS 

MISSED APPROACH: Climb to 1100 then climbing right turn to 4000 on DXO VOR/DME R-297 to DOHNT INT/DXO 15.5 DME and hold.

D-ATIS <b>133.675</b>	DETROIT APP CON <b>124.05 284.0</b>	METRO TOWER <b>135.0 317.725</b>	GND CON <b>121.8 (NW) 119.45 (NE)</b> <b>132.725 (SW) 119.25 (SE)</b>	CLNC DEL <b>120.65</b>	CPDLC
--------------------------	--	-------------------------------------	---	---------------------------	-------



TDZ/CL Rwy 3L, 4L, 4R and 22R REIL Rwy 3L, 9L, 9R and 21R HIRL all runways	CATEGORY	A	B	C	D
	S-ILS 22R	892/24 250 (300-1/2)			

EC-1, 09 SEP 2021 to 07 OCT 2021

EC-1, 09 SEP 2021 to 07 OCT 2021