

LOC/DME I-JKI 111.95	APP CRS 216°	Rwy Idg 10000
Chan 56 (Y)		TDZE 642
		Apt Elev 645

ILS Z or LOC RWY 22R

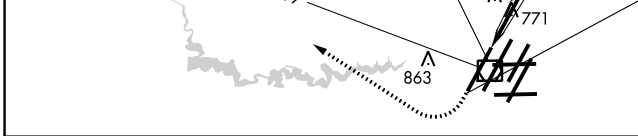
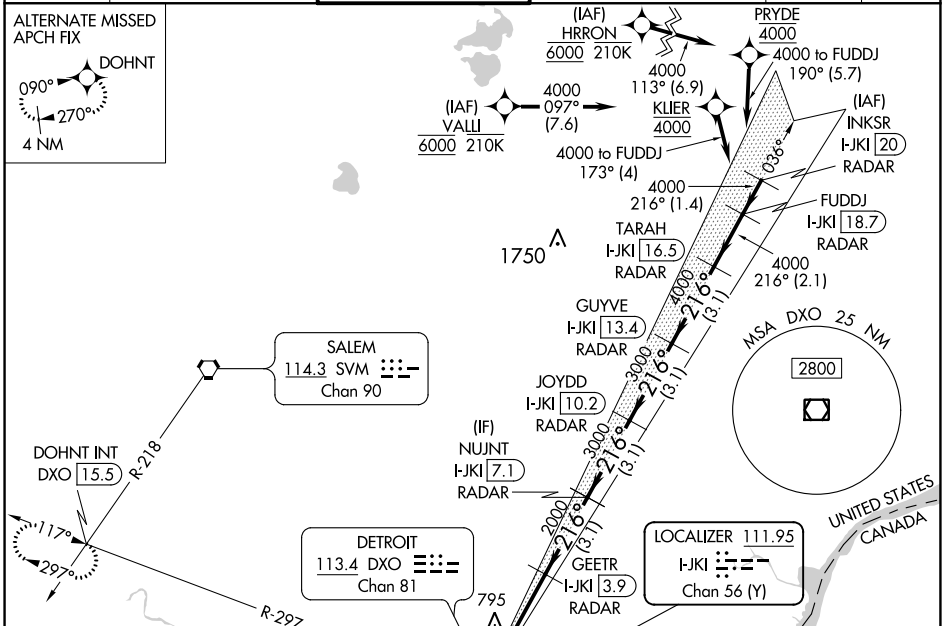
DETROIT METRO WAYNE COUNTY (DTW)

RNAV 1-GPS, HRRON and VALLI: RNAV 1-DME/DME/IRU or GPS required.
 Aircraft not DME/DME/IRU or GPS equipped - RADAR required for procedure entry.

MALSR MISSED APPROACH: Climb to 1100 then climbing right turn to 4000 on DXO VOR/DME R-297 to DOHNT INT/DXO 15.5 DME and hold.

Simultaneous approach authorized.
 **RVR 1800 authorized with use of FD or AP or HUD to DA.

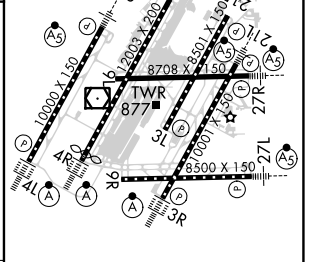
D-ATIS 133.675	DETROIT APP CON 124.05 284.0	METRO TOWER 135.0 317.725	GND CON 121.8 (NW) 119.45 (NE) 132.725 (SW) 119.25 (SE)	CLNC DEL 120.65	CPDLC
--------------------------	--	-------------------------------------	---	---------------------------	-------



ELEV	645	TDZE	642
------	-----	------	-----

VGSI and ILS glidepath not coincident (VGSI Angle 3.00/TCH 71).

1100	4000	DXO R-297	DOHNT INT	GEETR I-JKI [3.9] RADAR	NUJNT I-JKI [7.1] RADAR	JOYDD I-JKI [10.2] RADAR	GUYVE I-JKI [13.4] RADAR	TARAH I-JKI [16.5] RADAR	FUDDJ I-JKI [18.7] RADAR	
*LOC only.										
I-JKI DME ANTENNA I-JKI [0.2]	*I-JKI [0.9]	2000	3000	3000	4000	4000	216°	4000	GS 3.00° TCH 55	
1.1 NM	3 NM	3.1 NM	3.1 NM	3.1 NM	3.1 NM	2.1 NM				
CATEGORY	A	B	C	D						
S-ILS 22R**	842/24				200 (200-1/2)					
S-LOC 22R	1060/24	418 (500-1/2)		1060/40		418 (500-3/4)				
◻ CIRCLING	1180-1	535 (600-1)		1180-1 1/2		1240-2				
		535 (600-1 1/2)		595 (600-2)						



TDZ/CL Rwys 3R, 4L, 4R and 22R	60	90	120	150	180
REIL Rwys 3L, 9L, 9R and 21R	4:06	2:44	2:03	1:38	1:22
HIRL all Rwys					
FAF to MAP 4.1 NM					

EC-1, 09 SEP 2021 to 07 OCT 2021

EC-1, 09 SEP 2021 to 07 OCT 2021