

LOC/DME I-HJT <b>111.95</b> Chan 56(Y)	APP CRS <b>036°</b>	Rwy Idg TDZE Apt Elev	<b>10000</b> <b>645</b> <b>645</b>
----------------------------------------------	------------------------	-----------------------------	------------------------------------------

# ILS Z or LOC RWY 4L

DETROIT METRO WAYNE COUNTY (DTW)

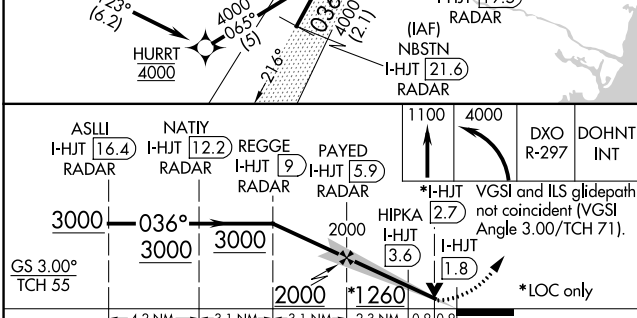
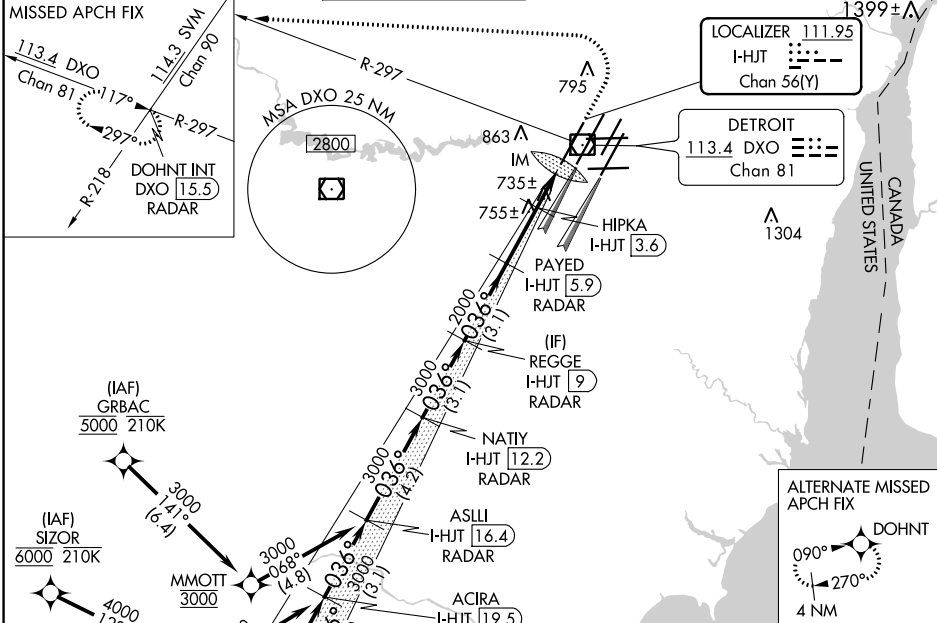
From GRBAC, SIZOR: RNAV 1-DME/DME/IRU or GPS required. Aircraft not DME/DME/IRU or GPS equipped - RADAR required for procedure entry. DME or RADAR required.



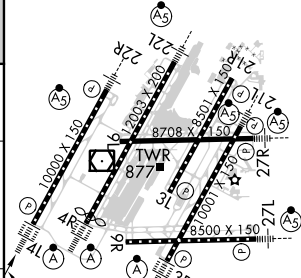
MISSED APPROACH: Climb to 1100 then climbing left turn to 4000 on DXO VOR/DME R-297 to DOHNT INT/DXO 15.5 DME/RADAR and hold.

Simultaneous approach authorized.

D-ATIS <b>133.675</b>	DETROIT APP CON <b>124.05 284.0</b>	METRO TOWER <b>135.0 317.725</b>	GND CON <b>121.8</b> (NW) <b>132.725</b> (SW)	CON <b>119.45</b> (NE) <b>119.25</b> (SE)	CLNC DEL <b>120.65</b>	CPDLC
--------------------------	----------------------------------------	-------------------------------------	-----------------------------------------------------	-------------------------------------------------	---------------------------	-------



ELEV 645	<b>D</b> TDZE 645
----------	-------------------



CATEGORY	A	B	C	D
S-ILS 4L	845/18 200 (200-½)			
S-LOC 4L	1260/24	615 (700-½)	1260-1¾	615 (700-1¾)
<b>C</b> CIRCLING	1260-1	615 (700-1)	1260-2	615 (700-2)
HIPKA FIX MINIMUMS (DME REQUIRED)				
S-LOC 4L	1000/24	355 (400-½)	1000/30	355 (400-¾)
<b>C</b> CIRCLING	1180-1	535 (600-1)	1180-1½	535 (600-½)
			1240-2	595 (600-2)

FAF to MAP 4.1 NM					
Knots	60	90	120	150	180
Min:Sec	4:06	2:44	2:03	1:38	1:22

EC-1, 09 SEP 2021 to 07 OCT 2021

EC-1, 09 SEP 2021 to 07 OCT 2021