

(KAYLN2.KAYLN) 21112

DETROIT METRO WAYNE COUNTY (DTW)

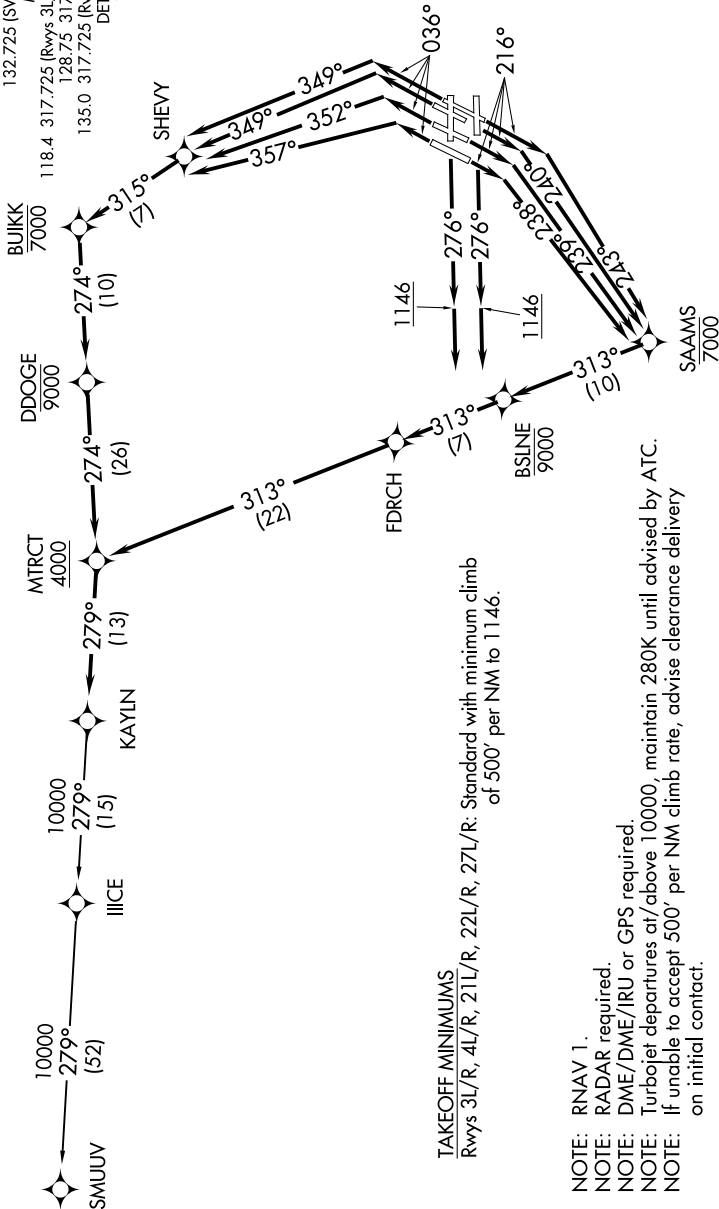
# KAYLN TWO DEPARTURE (RNAV) AL-119 (FAA)

DETROIT, MICHIGAN

EC-1, 09 SEP 2021 to 07 OCT 2021

**TOP ALTITUDE:  
17000**

D-ATIS 118.125  
CLINC DEL 120.65  
CPDIC  
GND CON  
121.8 (NW) 119.45 (NE)  
132.725 (SW) 119.25 (SE)  
METRO TOWER  
118.4 317.725 (Rwys 3L/R, 21L/R, 27R)  
128.75 317.725 (Rwy 27L)  
135.0 317.725 (Rwy 4L/R, 22L/R)  
DETROIT DEP CON  
125.525 284.0



**TAKEOFF MINIMUMS**  
Rwys 3L/R, 4L/R, 21L/R, 22L/R, 27L/R, 27R: Standard with minimum climb of 500' per NM to 1146.

- NOTE: RNAV 1.
- NOTE: RADAR required.
- NOTE: DME/DME/IRU or GPS required.
- NOTE: Turbojet departures at/above 10000, maintain 280K until advised by ATC.
- NOTE: If unable to accept 500' per NM climb rate, advise clearance delivery on initial contact.

(NARRATIVE ON FOLLOWING PAGE)

NOTE: Chart not to scale.

EC-1, 09 SEP 2021 to 07 OCT 2021

# KAYLN TWO DEPARTURE (RNAV)

(KAYLN2.KAYLN) 15AUG19

DETROIT, MICHIGAN

DETROIT METRO WAYNE COUNTY (DTW)