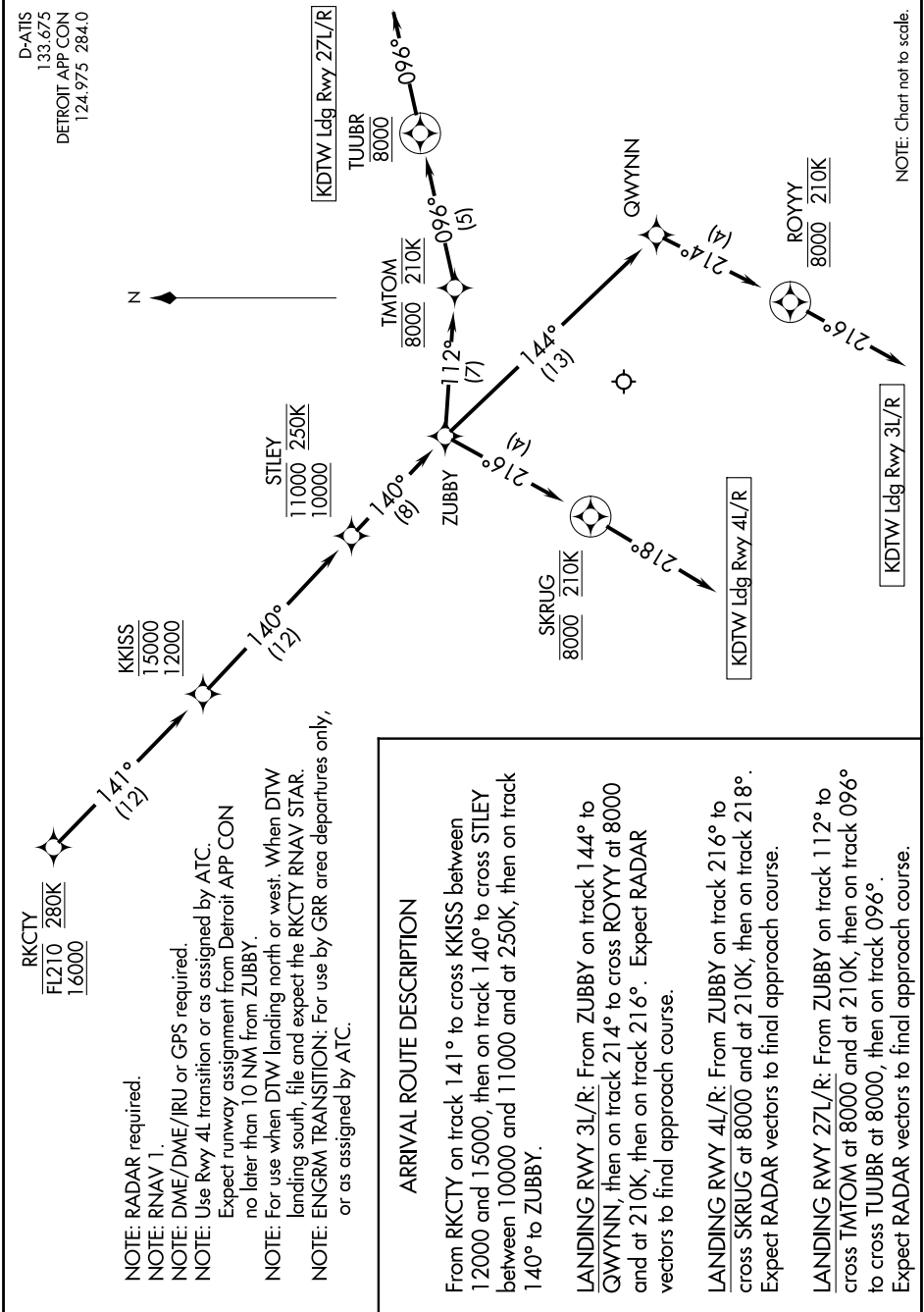


KKISS TWO ARRIVAL (RNAV) Arrival Route

EC-1, 09 SEP 2021 to 07 OCT 2021



RKCTY
FL210 280K
16000

NOTE: RADAR required.

NOTE: RNAV 1.

NOTE: DME/DME/IRU or GPS required.

NOTE: Use Rwy 4L transition or as assigned by ATC.

Expect runway assignment from Detroit APP CON no later than 10 NM from ZUBBY.

NOTE: For use when DTW landing north or west. When DTW landing south, file and expect the RKCTY RNAV STAR.

NOTE: ENGRM TRANSITION: For use by GRR area departures only, or as assigned by ATC.

KKISS
15000
12000

ZUBBY
11000 250K
10000

STILEY
11000 250K
10000

TMTOM
8000 210K

TUUBR
8000

SKRUG
8000 210K

GWYNN

ROYYY
8000 210K

D-ATIS
133.675
DETROIT APP CON
124.975 284.0

KDTW Ldg Rwy 27L/R

KDTW Ldg Rwy 4L/R

KDTW Ldg Rwy 3L/R

NOTE: Chart not to scale.

KKISS TWO ARRIVAL (RNAV) Arrival Route

EC-1, 09 SEP 2021 to 07 OCT 2021